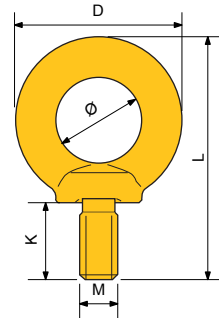


# PRIBOR G 80

## OČNI VIJAK I MATICA / D RING

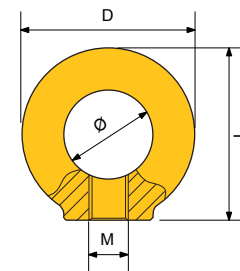
### OČNI VIJAK

Šifra	Veličina mm	Nosivost/T(4:1)		D (mm)	K (mm)	Ø (mm)	L (mm)	Težina (KG)
		Nosiv. O°	Nosiv.90°					
25860	M6	0.4	0.15	28	13	16	42	0.05
25861	M8	1	0.4	36	15	20	51	0.06
25862	M10	1	0.4	45	18	25	63	0.11
25863	M12	2	0.75	54	22	30	75	0.18
25864	M16	4	1.5	63	28	35	88	0.28
25865	M20	6	2.3	72	30	40	101	0.45
25866	M24	8	3.2	90	38	50	128	0.87
25867	M30	12	4.5	108	45	60	154	1.66
25868	M36	16	7	126	55	70	183	2.65
25869	M42	24	9	144	65	80	212	4.03
25870	M48	32	12	166	70	90	238	6.38



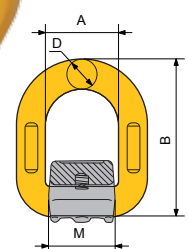
### OČNA MATICA

Šifra	Veličina mm	Nosivost /T(4:1)		D mm	Ø mm	L mm	Težina KG
		Nosiv. O°	Nosiv. 90°				
25876	M6	0.4	0.15	36	20	36	0.049
25877	M8	1	0.4	36	20	36	0.05
25878	M10	1	0.4	45	25	45	0.09
25879	M12	2	0.75	54	30	53	0.16
25880	M16	4	1.5	63	35	62	0.24
25881	M20	6	2.3	72	40	71	0.36
25882	M24	8	3.2	90	50	90	0.72
25883	M30	12	4.5	108	60	109	1.32
25884	M36	16	7	126	70	128	2.08
25885	M42	24	9	144	80	147	3.11
25886	M48	32	12	166	90	168	5.02



### D - RING

Šifra	Nosivost (T)	A (mm)	B (mm)	D (mm)	M (mm)	Težina (KG)
25892	2	42	88	14	40	0.47
25893	3.15	45	94	17	42.5	0.69
25894	5.3	55	118	22	50	1.46
25895	8	70	141	26.5	66.5	2.5
25896	15	97	188	34	90	5.79

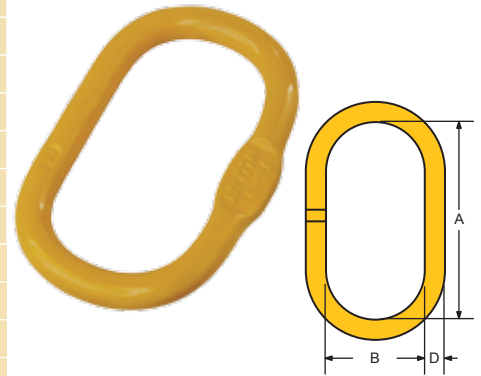


# PRIBOR G 80

## OVJESNE KARIKE

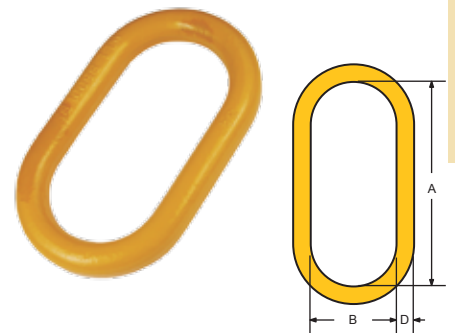
### OVJESNA KARIKA A343

Šifra	Lanac(Ø)		Nosivost (t)	Dimenzije(mm)			Težina kg
	⊥	Λ		A	B	D	
25711	7	6	1.6	110	60	14	0.34
25712	8	7	2.12	110	60	16	0.53
25713	10	8	3.15	135	75	18	0.823
25714	13	10	5.3	160	90	22	1.5
25715	16	13	8	180	100	26	2.32
25716	18	16	11.2	200	110	32	3.95
25717	20	18	14	260	140	36	6.34
25718	22	20	17	300	160	40	8.96
25719	26	22	21.2	340	180	45	12.8
25720	32	26	31.5	350	190	50	16.55
25721	36	32	45	400	200	56	23.28
25722	40	36	56	430	220	63	32



### OVJESNA KARIKA A342

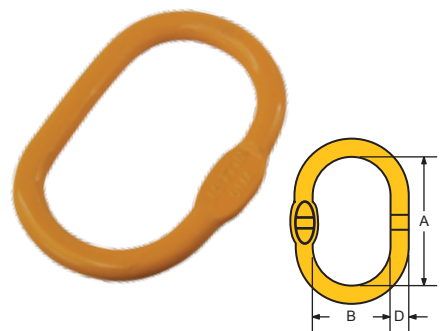
Šifra	Veličina (mm)	Nosivost (t)	Dimenzije (mm)			Težina kg
			A	B	D	
25731	13	3.17	127	63.5	13	0.37
25732	16	4.08	152	76.0	16	0.69
25733	19	5.58	140	70.0	19	0.94
25734	22	6.44	162	95.5	22	1.54
25735	25	11.05	178	89.0	25	2.2
25736	32	16.42	222	111	32	4.34
25737	38	25.67	267	133	38	7.36
25738	44	38.51	305	152	44	11.44
25739	51	46.54	356	178	51	16.8



PRIBOR G80

### OVJESNA KARIKA A344

Šifra	Veličina (mm)	Nosivost (t)	Dimenzije (mm)			Težina kg
			A	B	D	
25741	12	1.6	100	60	12	0.27
25742	14	2.76	100	60	14	0.38
25743	18	4	160	90	18	0.85
25744	20	6.5	160	90	20	1.2
25745	22	8.2	180	100	22	1.63
25746	25	11.5	180	100	25	2.13
25747	28	12.8	270	140	28	3.81
25748	32	16	270	140	32	5.05



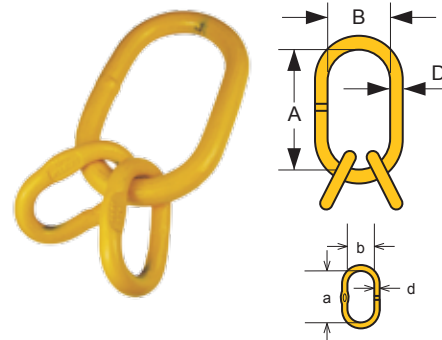
# PRIBOR G 80

## OVJESNE KARIKE U GARNITURI

- Faktor sigurnosti za lanačene priveznice 4:1
- Faktor sigurnosti za priveznice od čeličnog užeta 5:1

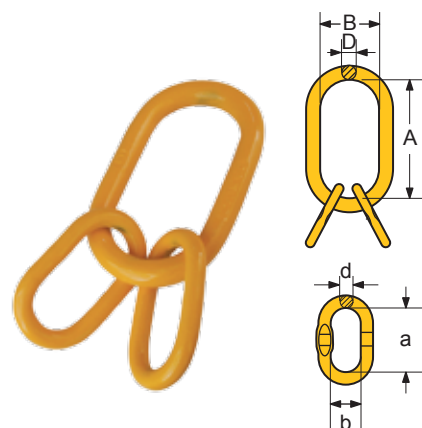
### OVJESNA KARIKA U GARNITURI A346

Šifra	Veličina	WLL	B	D	A	b	d	a	Težina
	mm								
25751	6	2.36	75	18	135	25	13	54	1.18
25751A	7	3.15	75	18	135	38	13	60	1.24
25752	8	4.25	90	22	160	34	16	70	2.2
25753	10	6.70	100	26	180	40	18	85	3.4
25754	13	11.20	110	32	200	50	22	115	6.1
25755	16	17	140	36	260	65	26	140	9.98
25756	18	21.2	180	45	340	100	32	180	18.9
25757	20	26.5	190	50	350	100	32	180	22.6
25758	22	31.5	190	50	350	100	36	180	25.2
25759	26	45	200	56	400	110	40	200	34.26
25760	28	50	220	63	430	110	45	200	47.11
25760A	32	63	250	72	460	110	50	200	66.46



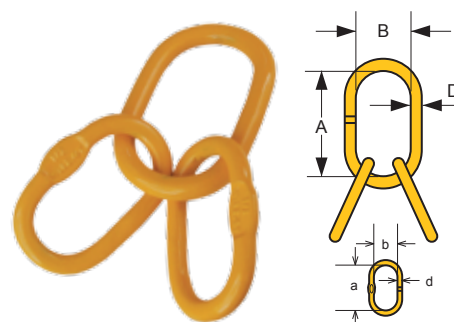
### OVJESNA KARIKA U GARNITURI A345

Šifra	Veličina (mm)	Nosivost	B	A	D	a	b	d	Težina
		(t)							
25781	19	4.1	70	140	20	85	40	14	1.55
25782	25	8.4	89	178	25	100	60	18	3.29
25783	32	14.1	110	220	32	100	60	22	7.18
25784	38	21.3	135	267	38	180	100	28	12.91
25785	44	33.3	152	305	45	180	100	35	21.25
25786	51	40.3	178	356	50	180	100	38	30.34



### OVJESNA KARIKA U GARNITURI A347

Šifra	Veličina mm	Nosivost (t)		D	B	A	d	a	b	Težina
		4:1	5:1							
25791	14	2.4	2	14	60	100	12	85	40	0.82
25792	17	3.2	2.5	18	90	160	14	100	60	1.61
25793	20	5	4	20	90	160	14	100	60	1.95
25794	22	8	6.4	22	100	180	18	150	70	3.16
25795	28	12	9.6	28	140	270	22	160	90	6.75
25796	32	17.4	13.9	32	140	270	25	180	100	9.31



# PRIBOR G 80 i 100

## REZERVNI DIJELOVI

### OSIGURAČ KUKE ZA LANAC

Šifra	Veličina	Težina
	mm	kg
25371P	5/6	0.04
25372P	7/8	0.05
25373P	10	0.10
25374P	13	0.20
25375P	16	0.30
25376P	18/20	0.40
25377P	22	0.60

Zajedno sa oprugom i vijkom



### OSIGURAČ SAMOZATVARAJUĆE KUKE

Šifra	Veličina	Težina
	mm	kg
25001P	6	0.02
25002P	7/8	0.03
25003P	10	0.05
25004P	13	0.10
25005P	16	0.18
25006P	18/20	0.38

Zajedno sa oprugom i zatikom



### BOLCNA ZA SPOJNICU LANCA VG, crna



Šifra	Veličina	Težina
	mm	kg
25201P	6	0.01
25203P	7/8	0.02
25204P	10	0.05
25205P	13	0.10
25206P	16	0.15
25207P	18/20	0.30
25208P	22	0.46
25209P	26	0.60

### BOLCNA ZA SPOJNICU LANCA VG, ZN



Šifra	Veličina	Težina
	mm	kg
25201S	5/6	0.01
25202S	7/8	0.02
25203S	10	0.05
25204S	13	0.10
25205S	16	0.15
25206S	18/20	0.30
25207S	22	0.46
25208S	24/26	0.60

### BOLCNA KUKE ZA LANAC

Šifra	Veličina	Težina
	mm	kg
25021P	6	0.01
25022P	7/8	0.02
25023P	10	0.04
25024P	13	0.08
25025P	16	0.16
25026P	18/20	0.28
25027P	22	0.36

Zajedno sa elastičnim zatikom



### OSIGURAČ KUKE SA OKOM

Šifra	Veličina	Težina
	mm	kg
25121P	6	0.04
25122P	7/8	0.05
25123P	10	0.10
25124P	13	0.20
25125P	16	0.30
25126P	18/20	0.40
25127P	22	0.60



### PLOČICE ZA OZNAČAVANJE



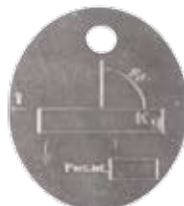
Br.1



Br.2



Br.3



Br.4



Br.5

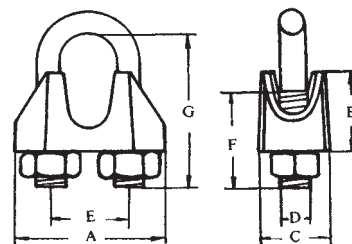


Br.6

### STEZALJKA, ZN DIN 741

MATERIJAL TIJELA: KOVANI ČELIK  
MATERIJAL "U" VIJKA: C15

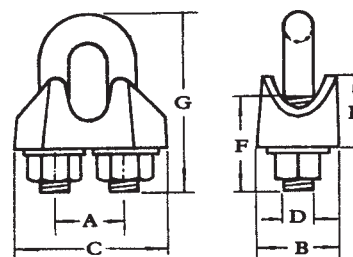
Šifra	Veličina mm	A	B	C	D	E	F	G
		mm	mm	mm	mm	mm	mm	mm
22101	3	21	10	10	4	9	12	16.6
22102	5	23	10	11	5	11	13	19.65
22103	6.5	26	11	12	5	13	15	23.65
22104	8	30	15	14	6	16	19	28.85
22105	10	34	17	18	8	19	22	35
22106	11	36	18	19	8	20	22	37
22107	13	40	21	23	10	24	30	46.24
22108	14	44	22	23	10	25	30	48.24
22109	16	50	26	26	12	29	33	52.5
22110	19	54	30	29	12	32	38	64.5
22111	22	61	34	33	14	37	44	72.5
22112	26	65	37	35	14	41	45	82.5
22113	30	74	43	37	16	48	50	95.6
22114	34	80	50	42	16	52	55	105.6
22115	40	88	55	45	16	58	60	125.6



### STEZALJKA, ZN DIN 1142 (EN 13411-5 TIP A)

MATERIJAL TIJELA: KOVANI ČELIK  
MATERIJAL "U" VIJKA: C40

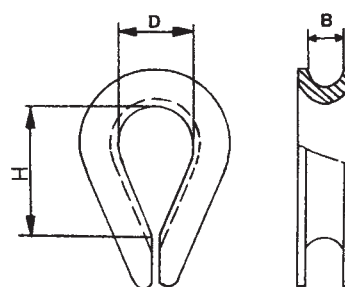
Šifra	Veličina mm	A	B	C	D	E	F	G
		mm	mm	mm	mm	mm	mm	mm
22251	5	12	13	25	5	13	13	25
22252	6.5	14	16	30	6	14	17	32
22253	8	18	20	39	8	18	20	41
22254	10	20	20	40	8	21	24	46
22254A	12	24	24	50	10	25	28	56
22255	13	27	28	55	12	29	30	64
22255A	14	28	28	59	12	30	31	66
22256	16	32	32	64	14	35	35	76
22257	19	36	32	68	14	40	36	83
22258	22	40	34	74	16	44	40	96
22259	26	46	38	84	20	51	50	111
22260	30	54	41	95	20	59	55	127
22261	34	60	45	105	22	67	60	141
22262	40	68	49	117	24	77	65	159



### JEZGRA DIN6899 TIP A

MATERIJAL: C15

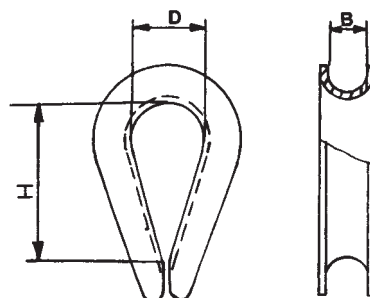
Šifra	Veličina mm	B mm	H mm	D mm
23101	1.8	2	17.5	8
23102	2	2.5	19.5	9
23103	2.5	3	21.5	10
23104	3	3.5	23.5	11
23105	3.5	4	26.5	12
23106	4	5	28.5	13
23107	5	6	30	14
23108	6	7	33	15
23109	7	8	35	16
23110	8	9	39	18
23111	9	10	43	20
23112	10	11	47.5	22
23113	11	12	51.5	24
23114	12	13	56.5	26
23115	13	14	61	28
23116	15	16	69.5	32
23117	16	19	78	35
23118	18	20	86.5	40
23119	20	22	95	44
23120	24/26	26	105	48



### JEZGRA DIN6899 TIP B

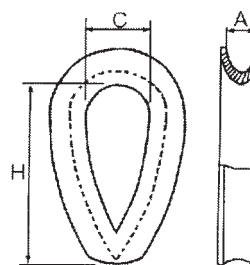
MATERIJAL: C15

Šifra	Veličina mm	B mm	H mm	D mm
23151	2.5x3	3	19	12
23152	3.5x4	4	21	13
23153	4x5	5	23	14
23154	5x6	6	25	16
23155	6x7	7	28	18
23156	7x8	8	32	20
23156A	8x9	9	35	22
23157	9x10	10	38	24
23157A	10x11	11	41	26
23158	11x12	12	45	28
23159	12x13	13	48	30
23160	13x14	14	51	32
23160A	14x15	15	54	34
23161	15x16	16	58	36
23162A	16x17	17	61	38
23162	16x18	18	64	40
23163	18x20	20	72	45
23164	20x22	22	80	50
23165	22x24	24	90	56
23166	24x26	26	99	62
23167	26x28	28	112	70
23168	28x30	30	120	75
23169	30x32	32	128	80
23170	32x34	34	152	95
23171	34x36	36	160	100
23172	36x38	38	176	110
23173	38x40	40	184	115
23174	40x42	42	192	120
23175	42x45	45	240	150



### JEZGRA DIN 3090

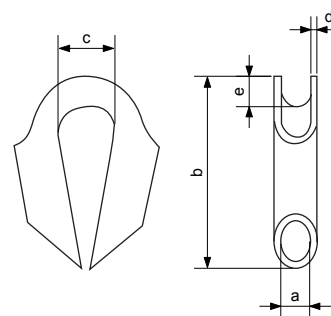
Šifra	Veličina mm	A mm	H mm	C mm
28032	4	5	29	10
28033	6	7	42	15
28034	8	9	56	20
28035	10*	11	70	25
28036	12	13	85	30
28037	14	16	102	35
28038	16	18	113	40
28039	18	20	127	45
28040	20	22	141	50
28041	22	24	153	55
28042	24	26	165	60
28043	26	29	181	65
28044	28	31	193	70
28045	32	35	223	80
28046	36	40	247	90
28047	40	44	281	100
28048	44	48	305	110
28049	48	53	329	120



### JEZGRA - CIJEVASTI TIP

- Materijal: mekani čelik
- Završna obrada: obojeno

Šifra	Debljina čeličnog užeta	Otvor cijevi	Dužina	Širina nutarnja	Debljina materijala	Visina utora	Težina kom.
	mm	a mm	b mm	c mm	d mm	e mm	kg
23550	10	12	90	23	4	8	0.25
23551	12	15	105	27	5	10	0.42
23552	14	17	115	27	5	10	0.5
23553	16	19	120	32	5	12	0.6
23554	18	22	140	35	5	15	0.75
23555	22	25	180	45	6	16	1.4
23556	24	28	180	45	7	16	1.75
23557	26	30	195	47	7	18	2
23558	32	35	215	60	7	22	2.4
23559	38	45	260	70	7	27	3.3
23560	44	50	280	75	7	28	4.06

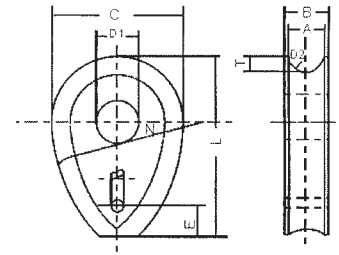


# PRIBOR

## JEZGRE

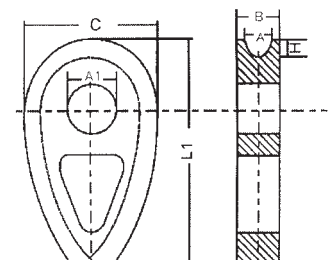
### JEZGRA DIN 3091 - KOVANI ČELIK

Šifra	Veličina mm	Dimenzije mm						
		A	B	C	D1	T	L	N
29121	8	9	15	40	14	4.5	56	48
29122	10	11	17.5	50	18	6	70	60
29123	12	13	20	60	21	7.5	84	72
29124	14	16	23.5	70	25	9	98	84
29125	16	18	26	80	28	10.5	110	96
29126	18	20	28.5	90	31	12	130	110
29127	20	22	31	100	35	13.5	140	120
29128	22	24	33.5	110	38	15	150	130
29129	24	26	36	120	41	16.5	170	140
29130	26	29	39.5	130	44	18	180	160
29131	28	31	42	140	47	20	200	170
29132	32	35	47	160	53	23	220	190
29133	36	40	53	180	59	26	250	220
29134	40	44	58	200	65	29	280	240
29135	44	48	63	220	70	32	310	260



### JEZGRA DIN 3091 - KOVANI ČELIK

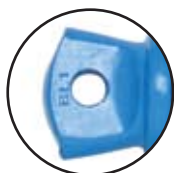
Šifra	Veličina mm	Dimenzije mm					
		A	B	A1	C	L1	H
29141	8	9	15	14	40	66	4.5
29142	10	11	17.5	18	50	82	6
29143	12	13	20	21	60	98	7.5
29144	14	16	23.5	25	70	114	9
29145	16	18	26	28	80	130	10.5
29146	18	20	28.5	31	90	145	12
29147	20	22	31	35	100	161	13.5
29148	22	24	33.5	38	110	177	15
29149	24	26	36	41	120	193	16.5
29150	26	29	39.5	44	130	209	18
29151	28	31	42	47	140	224	20
29152	32	35	47	53	160	256	23
29153	36	40	53	59	180	288	26
29154	40	44	58	65	200	320	29
29155	44	48	63	70	220	352	32
29156	48	53	69	76	240	384	35



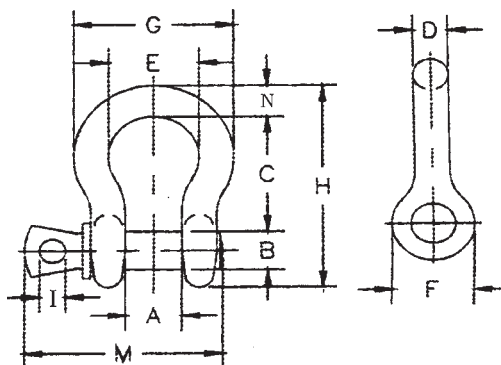


### ŠKOPAC TRBUŠASTI VISOKOOTPORNI US TIP G209 S209

FAKTOR SIGURNOSTI 6:1



Oznaka utisnuta



Škopac visokootporni je proizveden prema U.S. Federal Specification RR-C-271 Tip IVA. Klasa 2. Kvaliteta A. Vruće cinčani

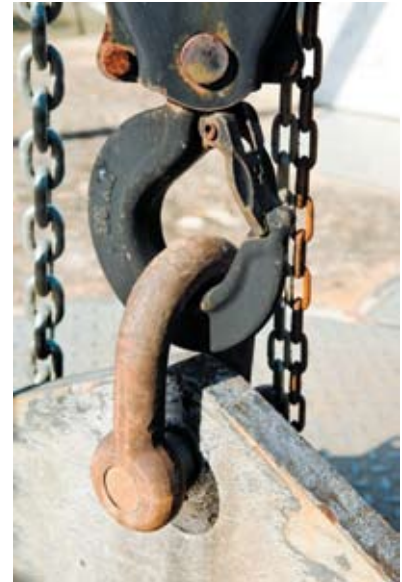
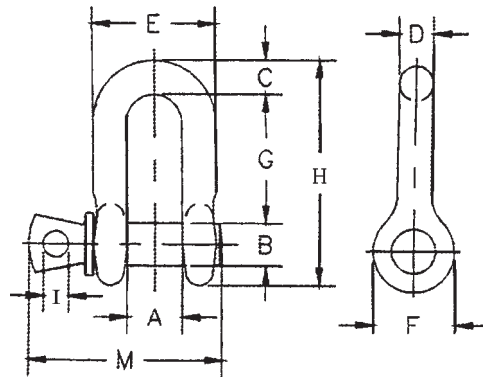
Šifra	Veličina	Nosivost (t)	Dimenzije (mm)											Težina kom. (kg)
	(in.)		A	B	C	D	E	F	G	H	I	M	N	
21151	3/16	1/3	9.65	6.35	22.4	4.85	15.2	14.2	24.9	37.3	4.06	28.4	4.85	0.03
21152	1/4	1/2	11.9	7.85	28.7	6.35	19.8	15.5	32.5	46.7	4.85	35.1	6.35	0.05
21153	5/16	3/4	13.5	9.65	31.0	7.85	21.3	19.1	37.3	53.0	5.60	42.2	7.85	0.09
21154	3/8	1	16.8	11.2	36.6	9.65	26.2	23.1	45.2	63.0	6.35	51.5	9.65	0.14
21155	7/16	1-1/2	19.1	12.7	42.9	11.2	29.5	26.9	51.5	74.0	7.85	60.5	11.2	0.17
21156	1/2	2	20.6	16.0	47.8	12.7	33.3	30.2	58.5	83.5	9.65	68.5	12.7	0.33
21157	5/8	3-1/4	26.9	19.1	60.5	16.0	42.9	38.1	74.5	106	11.2	85.0	17.5	0.62
21158	3/4	4-3/4	31.8	22.4	71.5	19.1	51.0	46.0	89.0	126	12.7	101	20.6	1.07
21159	7/8	6-1/2	36.6	25.4	84.0	22.4	58.0	53.0	102	148	12.7	114	24.6	1.64
21160	1	8-1/2	42.9	28.7	95.5	25.4	68.5	60.5	119	167	14.2	129	26.9	2.28
21161	1-1/8	9-1/2	46.0	31.8	108	29.5	74.0	68.5	131	190	16.0	142	31.8	3.36
21162	1-1/4	12	51.5	35.1	119	32.8	92.5	76.0	146	210	17.5	156	35.1	4.31
21163	1-3/8	13-1/2	57.0	38.1	133	36.1	92.0	84.0	162	233	19.1	174	38.1	6.14
21164	1-1/2	17	60.5	41.4	146	39.1	98.5	92.0	175	254	20.6	187	41.1	7.80
21165	1-3/4	25	73.0	51.0	178	46.7	127	106	225	313	25.4	231	57.0	12.6
21166	2	35	82.5	57.0	197	53.0	146	122	253	348	31.0	263	61.0	20.4
21166A	2-1/4	42.5	95	65	220	57.0	160	143	274	32	33.0	321	66.0	32
21167	2-1/2	55	105	70.0	267	69.0	184	145	327	453	35.1	330	79.5	38.9

### ŠKOPAC RAVNI VISOKOOTPORNI US TIP G210 S210

FAKTOR SIGURNOSTI 6:1



Oznaka utisnuta



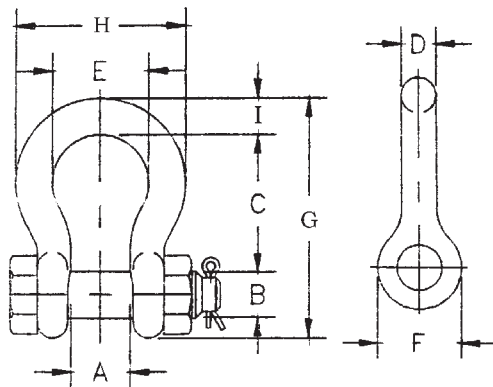
Škopac visokootporni je proizveden prema US Federal Specification RR-C-271 Tip IVB. Klasa 2. Kvaliteta A.

Šifra	Veličina	Nosivost (t)	Dimenzije (mm)										Težina
	(in.)		A	B	C	D	E	F	G	H	I	M	kom. (kg)
21101	1/4	1/2	11.9	7.85	6.35	6.35	24.6	15.5	22.4	40.4	4.85	35.1	0.05
21102	5/16	3/4	13.5	9.65	7.85	7.85	29.5	19.1	26.2	48.5	5.60	42.2	0.08
21103	3/8	1	16.8	11.2	9.65	9.65	35.8	23.1	31.8	58.5	6.35	51.5	0.13
21104	7/16	1-1/2	19.1	12.7	11.2	11.2	41.4	26.9	36.6	67.5	7.85	60.5	0.20
21105	1/2	2	20.6	16.0	12.7	12.7	46.0	30.2	41.4	77.0	9.65	68.5	0.27
21106	5/8	3-1/4	26.9	19.1	15.7	16.0	58.5	38.1	51.0	95.5	11.2	85.0	0.57
21107	3/4	4-3/4	31.8	22.4	20.6	19.1	70.0	46.0	60.5	115	12.7	101	1.20
21108	7/8	6-1/2	36.6	25.4	24.6	22.4	81.0	53.0	71.5	135	12.7	114	1.43
21109	1	8-1/2	42.9	28.7	25.4	25.4	93.5	60.5	81.0	151	14.2	129	2.15
21110	1-1/8	9-1/2	46.0	31.8	31.8	28.7	103	68.5	91.0	172	16.0	142	3.06
21111	1-1/4	12	51.5	35.1	35.1	31.8	115	76.0	100	191	17.5	156	4.11
21112	1-3/8	13-1/2	57.0	38.1	38.1	35.1	127	84.0	111	210	19.1	174	5.28
21113	1-1/2	17	60.5	41.4	41.1	38.1	137	92.0	122	230	20.6	187	7.23
21114	1-3/4	25	73.0	51.0	54.0	44.5	162	106	146	279	25.4	231	12.1
21115	2	35	82.5	57.0	51.0	51.0	184	122	172	312	31.0	263	19.2
21116	2-1/2	55	105	70.0	66.5	66.5	238	145	203	377	35.1	330	32.5

### ŠKOPAC TRBUŠASTI SA MATICOM VISOKOOTPORN I G2130 S2130



FAKTOR SIGURNOSTI 6:1



Oznaka utisnuta

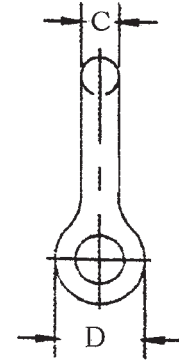
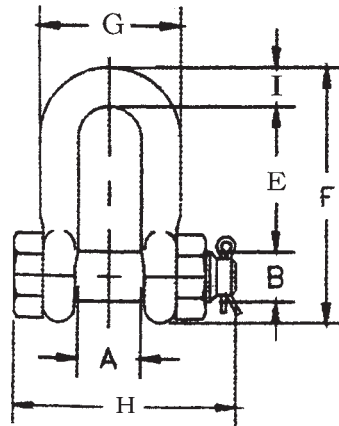
Škopac visokootporni je proizveden prema  
US Federal Specification RR-C-271  
Tip IVA. Kvaliteta A. Klasa 3.  
Vruće cinčan

Šifra	Veličina		Nosivost	Dimenzije (mm)								Težina kom.
	(in.)	(t)		A	B	C	D	E	F	G	H	
21201	3/16	1/3	9.65	6.35	22.4	4.85	15.2	14.2	37.2	24.9	4.85	0.03
21202	1/4	1/2	11.9	7.85	28.7	6.35	19.8	15.5	46.7	32.5	6.35	0.05
21203	5/16	3/4	13.5	9.65	31.0	7.85	21.3	19.1	53.0	37.3	7.85	0.10
21204	3/8	1	16.8	11.2	36.6	9.65	26.2	23.1	63.0	45.2	9.65	0.15
21205	7/16	1-1/2	19.1	12.7	42.9	11.2	29.5	26.9	74.0	51.5	11.2	0.22
21206	1/2	2	20.6	16.0	47.8	12.7	33.3	30.2	83.5	58.5	12.7	0.36
21207	5/8	3-1/4	26.9	19.1	60.5	16.0	42.9	38.1	106	74.5	17.5	0.76
21208	3/4	4-3/4	31.8	22.4	71.5	19.1	51.0	46.0	126	89.0	20.6	1.23
21209	7/8	6-1/2	36.6	25.4	84.0	22.4	58.0	53.0	148	102	24.6	1.79
21210	1	8-1/2	42.9	28.7	95.5	25.4	68.5	60.5	167	119	26.9	2.57
21211	1-1/8	9-1/2	46.0	31.8	108	28.7	74.0	68.5	190	131	31.8	3.75
21212	1-1/4	12	51.5	35.1	119	31.8	82.5	76.0	210	146	35.1	5.31
21213	1-3/8	13-1/2	57.0	38.1	133	35.1	92.0	84.0	233	162	38.1	7.18
21214	1-1/2	17	60.5	41.4	146	38.1	98.5	92.0	254	175	41.1	9.43
21215	1-3/4	25	73.0	51.0	178	44.5	127	106	313	225	57.0	15.4
21216	2	35	82.5	57.0	197	51.0	146	122	348	253	61.0	23.7
21216A	2 -1/4	42.5	95	65	220	57	160	143	382	274	67	33.5
21217	2-1/2	55	105	70.0	267	66.5	184	145	453	327	79.5	44.61
21218	3	85	127	82.5	330	76.0	200	165	546	365	92.0	70
21219	3-1/2	120	133	95.5	372	92.0	229	203	626	419	105	120
21220	4	150	140	108	368	104	254	229	653	468	116	153

### ŠKOPAC RAVNI SA MATICOM VISOKOOTPORN I G2150 S2150



FAKTOR SIGURNOSTI 6:1



Oznaka utisnuta

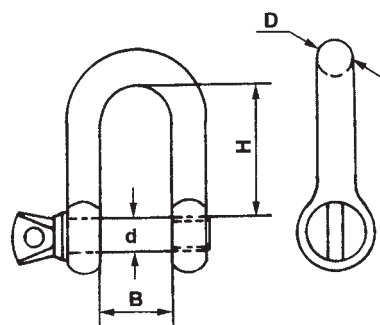
Škopac visokootporni je proizveden prema  
US Federal Specification RR-C-271  
Tip IVB, Kvaliteta A. Klasa 3.  
Vruće cinčan

Šifra	Veličina (in.)	Nosivost (t)	Dimenzije (mm)									Težina kom. (kg)
			A	B	C	D	E	F	G	H	I	
21231	1/4	1/2	11.9	7.85	6.35	15.5	19.1	40.4	24.6	39.6	6.35	0.06
21232	5/16	3/4	13.5	9.65	7.85	19.1	25.4	48.5	29.5	46.2	7.85	0.10
21233	3/8	1	16.8	11.2	9.65	23.1	31.0	58.5	35.8	55.0	9.65	0.15
21234	7/16	1-1/2	19.1	12.7	11.2	26.9	36.1	67.5	41.1	63.5	11.2	0.22
21235	1/2	2	20.6	16.0	12.7	30.2	41.4	77.0	46.0	71.0	12.7	0.34
21236	5/8	3-1/4	26.9	19.1	16.0	38.1	51.0	95.5	58.5	89.5	16.0	0.67
21237	3/4	4-3/4	31.8	22.4	19.1	46.0	60.5	115	70.0	103	20.6	1.14
21238	7/8	6-1/2	36.6	25.4	22.4	53.0	71.5	135	81.0	120	24.6	1.74
21239	1	8-1/2	42.9	28.7	25.4	60.5	81.0	151	93.5	135	25.4	2.52
21240	1-1/8	9-1/2	46.0	31.8	28.7	68.5	91.0	172	103	150	31.8	3.45
21241	1-1/4	12	51.5	35.1	31.8	76.0	100	191	115	165	35.1	4.90
21242	1-3/8	13-1/2	57.0	38.1	35.1	84.0	111	210	127	183	38.1	6.24
21243	1-1/2	17	60.5	41.4	38.1	92.0	122	230	137	196	41.1	8.39
21244	1-3/4	25	73.0	51.0	44.5	106	146	279	162	230	54.0	14.2
21245	2	35	82.5	57.0	51.0	122	172	312	184	264	51.0	21.2
21246	2-1/2	55	105	70.0	66.5	145	203	377	238	344	66.5	38.6
21247	3	85	127	82.5	76.0	165	216	429	279	419	89.0	56

### ŠKOPAC KOMERCIJALNI RAVNI

MATERIJAL: 1.C15  
2.C45

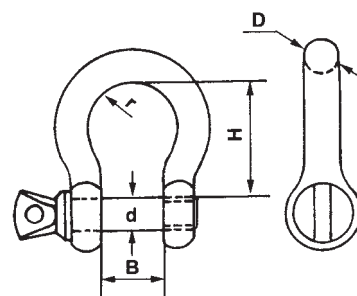
Šifra	Veličina	D	d	B	H	Nosivost (t)
		mm	mm	mm	mm	
21001	4	4	4	8	14	-
21002	5	5	5	10	19	0.08
21003	6	6	6	12	24	0.1
21004	8	8	8	16	32	0.2
21005	10	10	10	20	40	0.32
21006	11	11	11	22	44	0.4
21007	12	12	12	25	48	0.52
21008	14	14	14	28	56	0.645
21009	16	16	16	32	64	0.8
21010	18	18	18	36	71	1
21011	20	19	20	44	76	1.1
21012	22	22	22	44	85	1.5
21013	25	25	24	50	95	2.1
21014	28	28	27	56	106	3
21015	32	32	33	64	120	3.5
21016	35	36	36	70	130	4
21017	38	38	39	76	145	5
21018	42	42	42	76	145	6
21019	45	45	45	80	155	7
21020	50	50	52	90	175	8



### ŠKOPAC KOMERCIJALNI TRBUŠASTI

MATERIJAL: 1.C15  
2.C45

Šifra	Veličina	D	d	B	H	2	Nosivost (t)
		mm	mm	mm	mm	mm	
21051	5	5	5	10	19.5	15	0.08
21052	6	6	6	12	24	18	0.1
21053	8	8	8	16	32	24	0.2
21054	10	10	10	20	40	30	0.32
21055	11	11	11	22	44.5	33	0.4
21056	12	12	12	25	49	36	0.52
21057	14	14	14	28	59	42	0.65
21058	16	16	16	32	64	48	0.8
21059	18	18	18	36	71	54	1
21060	20	19	20	38	80	60	1.1
21061	22	22	22	44	85	66	1.5
21062	25	25	24	50	100	75	2.1
21063	28	28	27	56	116	86	3
21064	32	32	33	64	129	96	3.5
21065	38	38	39	76	151	114	5



### ŠKOPAC DIN 82101

Materijal: Visokootporni čelik  
Završna obrada: Prirodna boja ili cinčani  
Faktor sigurnosti: 4xNosivost



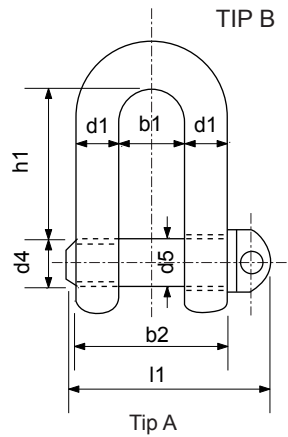
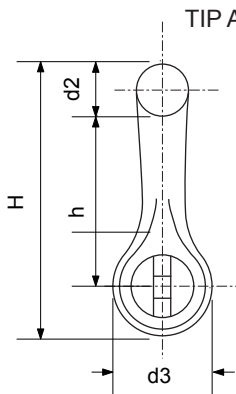
TIP A



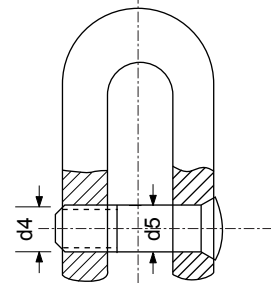
TIP B



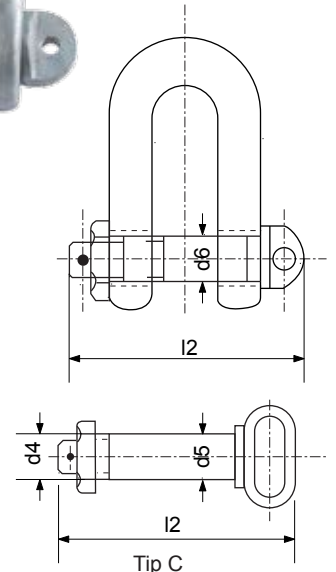
TIP C



Tip A



Tip B

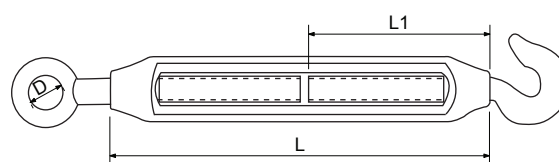
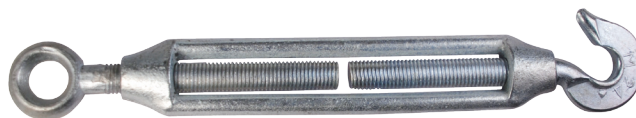


Tip C

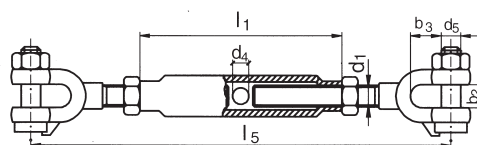
Šifra	Nominalna veličina			Nosivost		Dimenzije (mm)														Težina		
	A	B	C	t	kN*	b1	b2	d1	d2	d3	d4	d5	d6	H	h1	h	l1	l2	A	B	C	
21601	0.1	-	-	0.1	1	7	15	4	5	10	M5	5	5.3-0.1	28	15.5	18	24	-	0.013	-	-	
21602	0.16	-	-	0.16	1.6	8	18	5	6	12	M6	6	6.4-0.1	33	18	21	28	-	0.024	-	-	
21603	0.25	-	-	0.25	2.5	11	25	7	8	16	M8	8	8.4-0.2	44	24	28	38	-	0.045	-	-	
21604	0.4	0.4	0.4	0.4	4.0	14	31	8	10	20	M10	10	10.5-0.3	55	30	35	45	58	0.090	0.085	0.100	
21605	0.6	0.6	0.6	0.63	6.3	17	39	10	12	24	M12	12	13-0.5	66	36	42	53	66	0.178	0.165	0.180	
21606	1	1	1	1	10	21	49	13	15	32	M16	16	17-0.5	88	49	57	64	80	0.360	0.340	0.390	
21607	1.6	1.6	1.6	1.6	16	27	63	17	19	40	M20	20	21-0.5	110	61	71	85	100	0.750	0.720	0.800	
21608	2	2	2	2	20	30	70	19	21	44	M22	22	23-0.5	121	67	78	93	110	1.000	0.960	1.080	
21609	2.5	2.5	2.5	2.5	25	33	78	21	23	48	M24	24	25-0.5	132	73	85	103	122	1.320	1.250	1.400	
21610	3	3	3	3.15	31.5	33	90	24	26	64	M27	27	23-0.5	150	83.5	97	120	140	1.850	1.750	2.000	
21611	4	4	4	4	40	42	100	27	29	60	M30	30	31-0.5	165	91	106	130	150	2.500	2.400	2.700	
21612	5	5	5	5	50	47	111	30	33	72	M36	36	37-0.5	198	111	129	144	172	4.000	3.800	4.300	
21613	6	6	6	6.3	63	53	126	34	37	78	M39	39	40-0.5	215	119.5	139	160	190	5.400	5.200	5.800	
21614	8	8	8	8	80	60	142	38	41	90	M45	45	46-0.5	248	139.5	162	182	217	7.900	7.600	8.500	
21615	10	10	10	10	100	66	155	42	45	96	M48	48	50-1	264	147	171	200	235	10.00	9.700	10.800	
21616	12	12	12	12.5	125	73	173	47	50	104	M52	52	54-1	286	158	184	216	254	13.500	13.000	14.000	
21617	16	16	16	16	160	81	193	52	55	120	M60	60	62-1	330	185	215	245	285	19.200	19.100	20.500	
21618	20	20	20	20	200	90	214	58	61	136	M68	68	70-1	374	211	245	270	311	28.000	27.500	29.500	
21619	25	-	25	25	250	100	226	63	67	144	M72	72	74-1	396	221	257	324	371	34.000	-	36.000	

### NATEZNI VIJAK - KOMERCIJALNI

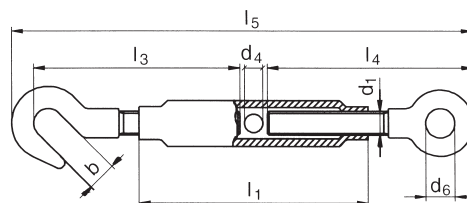
Šifra	Veličina	L	L1	D
		mm	mm	mm
24450	M5	67	30	8
24451	M6	94	40	10
24452	M8	118	51	11
24453	M10	128	58	12
24454	M12	175	85	16.5
24455	M14	188	90	18
24456	M16	227	92	20
24457	M18	246	95	22
24458	M20	275	110	22
24459	M22	282	120	24
24460	M24	310	148	29
24461	M30	405	170	32
24462	M32	405	172	33
24463	M36	425	215	37



### ZATEZNICA DIN 1478



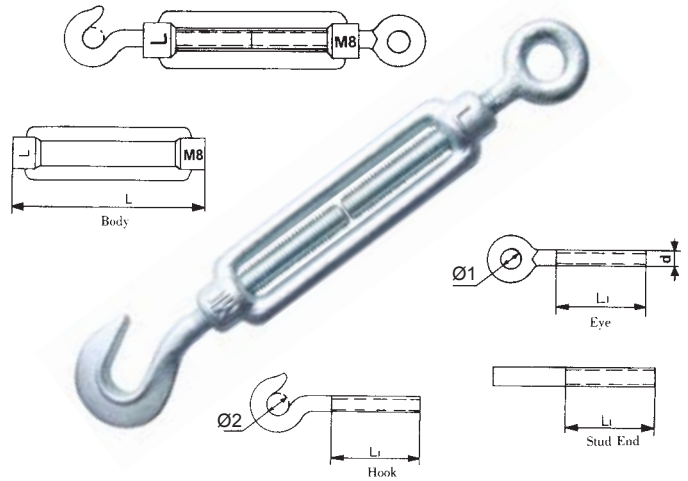
Šifra	Dimenzija(mm)							
	d1	l1	l5	d4	b2	b3	podesivost	matica x vijak(d5)
vijak i matica po DIN-u 601								
24501	M 8	110	205	8	8	15	85	M 6 x 35.0
24502	M 10	125	250	8	10	21	90	M 8 x 40.0
24503	M 12	125	300	10	14	19	90	M 10 x 45.0
vijak i matica po DIN-u 20633								
24504	M 16	170	340	10	20	24	125	M 16 x 61.5
24505	M 20	200	455	12	28	47	150	M 20 x 80.0
24506	M 24	255	550	12	33	53	180	M 24 x 100.5
24507	M 30	255	665	16	44	74	180	M 30 x 130.5



Šifra	Dimenzija(mm)								
	d1	d4	d6	b	l1	l3	l4	l5	podesivost
24701	M 6	6	9	8,5	110	80	80	172 - 262	90
24702	M 8	8	10	11,0	110	84	84	182 - 267	85
24703	M 10	8	14	13,5	125	105	105	213 - 308	95
24704	M 12	10	16	15,5	125	115	115	238 - 328	90
24705	M 16	10	22	19,0	170	165	165	320 - 440	120
24706	M 20	12	24	20,5	200	167	167	367 - 507	140
24707	M 24	12	27	26,0	255	205	205	447 - 627	180
24708	M 30	16	31	33,0	255	255	255	512 - 672	160
24709	M 36	16	37	44,0	295	276	276	568 - 748	180

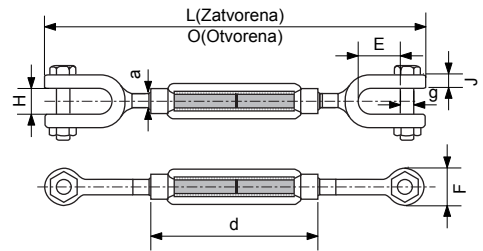
### NATEZNI VIJAK DIN1480

Šifra	Veličina(d)(mm)	L(mm)	L1(mm)	Ø1(mm)	Ø2(mm)
24151	M5	70	34	8	7
24152	M6	110	55	9	8
24153	M8	110	57	10	11
24154	M10	125	68	14	13
24155	M11	125	68	15	15
24156	M12	125	70	16	16
24157	M14	140	75	18	18
24158	M16	170	88	22	20
24159	M20	200	105	24	21
24160	M22	220	118	28	24
24161	M24	255	135	28	26
24162	M30	255	135	31	34
24163	M33	295	148	36	38
24164	M36	295	158	38	46
24165	M42	330	175	49	49
24166	M48	355	185	58	58
24167	M54	355	185	65	64
24168	M56	380	200	72	70



### NATEZNI VIJAK DIN 1480, VILICA - VILICA

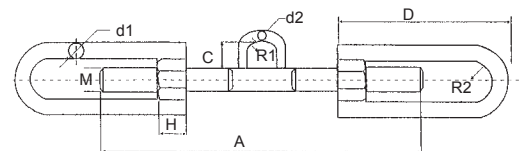
- Materijal: kovani čelik
- Standard: DIN 1480
- Završna obrada: elektro galvanizirano



Šifra	Veličina	L	O	d	H	J	g	F	E	Težina/kom
		mm	mm	mm	mm	mm	mm	mm	mm	kg
24601	M6	180	266	110	8	6	M6	15	20	0.13
24602	M8	186	266	110	11	7	M6	18	22	0.21
24603	M10	210	299	125	13	8.5	M8	21	26	0.35
24604	M12	220	303	125	15	9	M10	24	31	0.50
24605	M14	260	352	140	19	11.5	M12	30	38	0.885
24606	M16	290	406	170	19	11.5	M12	32	38	1.12
24607	M20	340	472	200	23	13.5	M16	36	47	2.50
24608	M22	370	518	220	25	14.5	M18	39	50	2.68
24609	M24	410	587	255	28	15	M20	44	54	3.74
24610	M30	450	615	255	35	17.5	M24	54	67	5.93

### NATEZNI VIJAK - HAMBURGER

Šifra	Veličina(M)		Dimenzija(mm)							Prekidna sila (T)
	mm	A	d1	d2	D	H	C	R1	R2	
24401	20	400	14.0	10.5	210	17	32	13	18	10
24401A	20	450	14.0	10.0	232	17.0	32	13	18	10
24402	20	500	14.0	10.0	260	17.0	32	13	18	10
24403	24	400	16.0	11.8	210	20.5	36	18	20	13
24404	24	500	16.0	11.8	260	20.5	36	18	20	13
24405	27	400	18.0	11.8	210	21.5	36	18	21.5	20
24406	27	500	18.0	11.8	260	21.5	36	18	21.5	20
24407	30	400	20.0	11.8	210	23	36	18	23	25
24408	30	500	20.0	11.8	260	23	36	18	23	25
24409	36	400	25.0	11.8	210	24.5	36	18	25	30
24409A	36	500	25.0	11.8	260	24.5	36	18	25	30

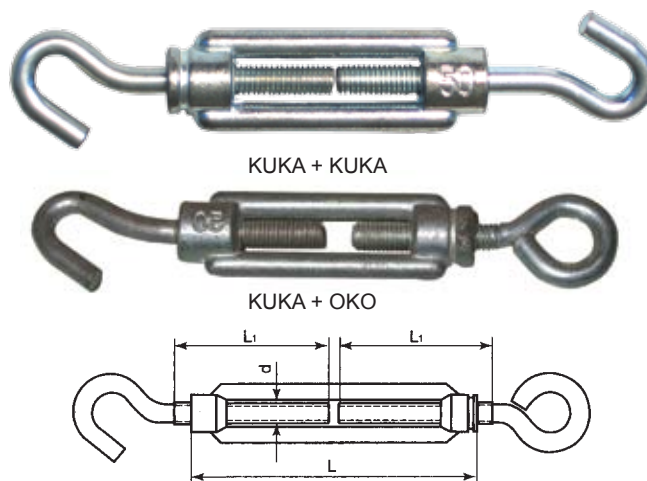




### NATEZNI VIJAK VARENI

MATERIJAL - TIJELO: VARENO - POCINČANO  
- KUKA I OKO: ŽICA

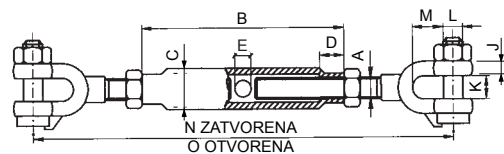
Šifra	Veličina	L	L1	d
	mm			
24051	5	50	25	M5
24052	5	70	35	M5
24053	6	60	30	M6
24054	6	100	50	M6
24055	8	70	35	M8
24056	8	110	55	M8
24057	10	80	40	M10
24058	10	120	60	M10
24059	12	110	60	M12
24060	12	130	65	M12



### ZATEZNICA, VISOKOOTPORNA, CIJEVASTA

• Vilica - Vilica • Oko - Oko • Vilica - Oko

Završna obrada: Vruće cinčano



Šifra	Veličina	A	B	C	D	E	J	K	L	M	N	O	Nosivost
	mm	mm	mm	mm	mm	mm	mm	mm	mm	mm	mm	mm	(t)
24101	6	6	105	15	11	5	6	9	5	21	175	305	0.2
24102	8	8	127	18	13	6	6	9	6.5	21	203	305	0.32
24103	10	10	152	21	16	8	8	11	8	21	235	349	0.5
24104	12	12	229	25	19	9	9	19	10	35	343	524	0.7
24105	16	16	229	27	22	11	9	22	12	51	361	550	1.2
24106	20	20	229	34	28	11	11	22	16	48	387	550	1.5
24107	22	22	305	38	32	13	13	25	20	60	476	702	2.2
24108	24	24	356	42	32	13	14	32	22	65	556	822	5
24109	27	27	356	45	41	13	14	32	22	65	559	822	5
24111	33	33	381	51	41	14	19	38	24	76	604	872	7
24112	36	36	381	54	44	16	19	38	27	76	610	872	10
24113	39	39	407	57	44	16	20	47	32	90	670	949	10
24114	45	45	407	70	51	17	25	51	36	111	705	959	13
24115	48	48	407	76	70	19	25	51	42	121	743	977	17
24116	50	50	500	76	60	19.5	32	55	42	121	900	1300	17

### KARABINER DIN5299

MATERIJAL: C15



TIP A



TIP B



TIP C

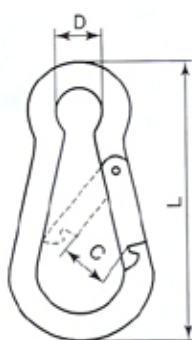


TIP D



TIP E

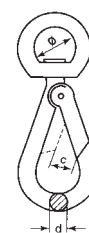
Šifra	Veličina mm	L	D	C
27001	4	40	7	7
27002	5	50	8	7
27003	6	60	9	8
27004	7	70	10	8
27005	8	80	12	9
27006	9	90	12	10
27007	10	100	15	11
27008	11	120	18	16
27009	12	140	20	19
27010	13	160	22	25
27011	14	180	22	35
27012	15	200	22	35



### KARABINER OKRETNI SA OSIGURAČEM

MATERIJAL: C15

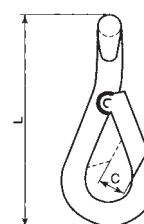
Šifra	Veličina in (mm)	d	c	Ø
27051	2 (5)	5.5	6	15.5
27052	2-1/2 (6)	6.3	7	15.5
27053	3 (7)	7	7	20
27054	3-1/2 (8)	7.9	9	22
27055	4 (10)	9.4	11	24



### KARABINER SA ZAKAČKOM

MATERIJAL: C15

Šifra	Veličina mm	L	C
27101	5	50	5.5
27102	6	63	6.5
27103	7	70	7.5
27104	8	80	10.5
27105	9	91	11
27106	10	106	14.5



### KARABINER DIN5299

MATERIJAL: C15



TIP A



TIP B



TIP C

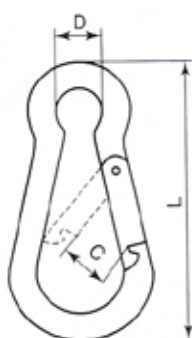


TIP D



TIP E

Šifra	Veličina mm	L	D	C
27001	4	40	7	7
27002	5	50	8	7
27003	6	60	9	8
27004	7	70	10	8
27005	8	80	12	9
27006	9	90	12	10
27007	10	100	15	11
27008	11	120	18	16
27009	12	140	20	19
27010	13	160	22	25
27011	14	180	22	35
27012	15	200	22	35



### KARABINER OKRETNI SA OSIGURAČEM

MATERIJAL: C15

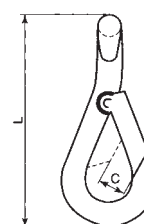
Šifra	Veličina in (mm)	d	c	Ø
27051	2 (5)	5.5	6	15.5
27052	2-1/2 (6)	6.3	7	15.5
27053	3 (7)	7	7	20
27054	3-1/2 (8)	7.9	9	22
27055	4 (10)	9.4	11	24



### KARABINER SA ZAKAČKOM

MATERIJAL: C15

Šifra	Veličina mm	L	C
27101	5	50	5.5
27102	6	63	6.5
27103	7	70	7.5
27104	8	80	10.5
27105	9	91	11
27106	10	106	14.5



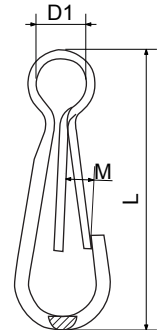
# PRIBOR

## KARABINERI / O RING

### KARABINER DIN 5287, TIP A

Šifra	Dimenzije(mm)			Težina kg/100kom
	L	M	D1	
27062	25	3.5	5.5	0.14
27063	30	4.5	6.0	0.17
27064	35	5.0	6.5	0.26
27065	40	5.5	7.0	0.38
27066	45	6.0	8.0	0.55
27067	50	6.5	9.0	0.72
27068	60	7.5	10.0	1.23
27069	70	9.0	11.0	1.90
27070	80	10.0	12.0	2.80

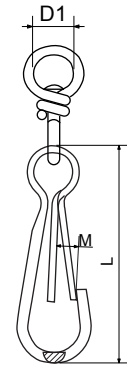
Završna obrada: Galvanizirano, Niklovano



### KARABINER DIN 5287, TIP B

Šifra	Dimenzije(mm)			Težina kg/100kom
	L	M	D1	
27041	25	3.5	6.5	0.30
27042	30	4.5	7.0	0.38
27042A	35	5.0	7.0	0.52
27043	40	5.5	9.0	0.69
27043A	45	6.0	9.0	1.00
27044	50	6.5	10.0	1.02
27045	60	7.5	12.0	2.03
27046	70	9.0	15.0	3.30
27047	80	10.0	18.0	4.80

Završna obrada: Galvanizirano, Niklovano



### KARABINER OKRETNI 5025Z

Šifra	Dužina	Unutarnji -Ø ringa	Težina kg/100kom
	mm	mm	
27081	50	10	2,00
27082	75	10	2,50
27083	75	12	2,70
27084	78	16	3,10
27085	82	20	3,20
27086	110	32	3,80

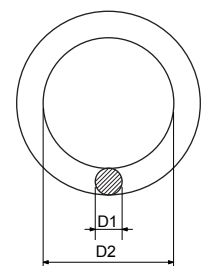


Materijal: čelik  
Završna obrada: Niklovano

### O RING

Šifra	Veličina	Dimenzije(mm)		Težina kg/100PCS
		D1	D2	
27401	5 x 30	5	30	1.75
27402	6 x 40	6	40	3.70
27403	7 x 35	7	35	4.00
27404	8 x 40	8	40	6.30
27405	9 x 40	9	40	8.10
27406	9 x45	9	45	8.10
27407	9 x 50	9	50	9.60
27408	10 x 40	10	40	10.20
27409	10 X 50	10	50	12.00

Materijal: čelična žica  
Završna obrada: ZN



## BETA OSIGURAČI / PREKLOPNI / S KUKE

### BETA OSIGURAČ

Šifra	Dimenzije						Težina kg/100kom
	D1 mm	D2 mm	L1 mm	L2 mm	D3 mm	D4 mm	
27501	2	10	50	25	2.5	9 - 14	0.33
27502	3	18	60	28	3.5	10 - 16	1.35
27503	4	20	60	30	4.5	16 - 20	2.84
27504	5	24	85	40	6.0	20 - 28	5.3
27505	6	30	105	50	7.0	28 - 40	10
27506	7	30	105	50	8.0	28 - 45	12.7
27507	8	28	110	55	9.0	30 - 45	17.1

Materijal: Čelik C45  
Završna obrada: Galvanizirano



### BETA OSIGURAČ DUPLI DIN 11024

Šifra	Dimenzije						Težina kg/100kom
	D1 mm	D2 mm	L1 mm	L2 mm	D3 mm	D4 mm	
27521	2	10	50	25	2.5	8-14	0.23
27522	3	16	62	32	3.5	14-20	0.91
27523	4	23	78	44	4.5	17-24	1.67
27524	5	26	92	50	5.5	18-30	3.38
27525	6	30	120	70	6.5	24-36	6.15
27526	7	30	130	72	8	26-40	8.54
27527	8	30	130	76	9	24-40	12.2

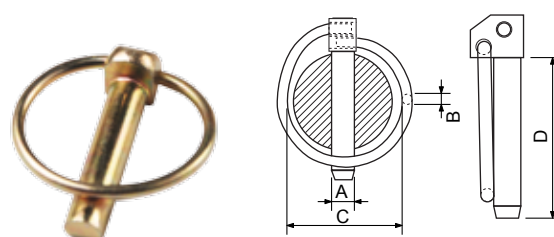
Materijal: Čelik C45  
Završna obrada: Galvanizirano



### PREKLOPNI OSIGURAČ

	Bolcna	O ring	Unutarnja širina O - ringa	Dužina bolcne	Težina kg/100kom
	a mm	b mm	c mm	d mm	kg
27551	4.5	3.4	34	42	2
27552	6	3.4	41	42	2.8
27553	7	3.4	41	42	3
27554	8	3.4	41	42	3.5
27555	9	3.4	41	42	3.8
27556	10	3.4	41	42	4.4
27557	11	3.4	41	42	4.6

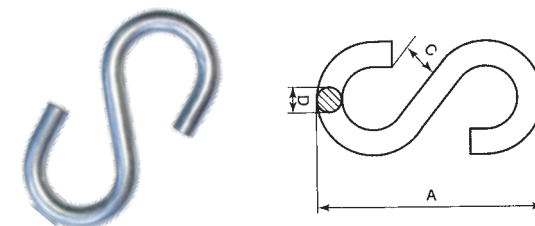
Materijal: Mekani čelik  
Završna obrada: Elektro cinčano



### "S" KUKA

Šifra	Veličina	D	A	C	Težina kg/100kom
	mm	mm	mm	mm	
27251	3	3	25	3	0.37
27252	4	4	35	4.5	0.8
27253	5	5	45	6.5	1.55
27254	6	6	55	7	2.6
27255	7	7	65	8	4.34
27256	8	8	75	10	6.6
27257	10	10	105	11	15.05
27258	12	12	120	13.5	21.2

Materijal: C15



### NAPINJAČ

Šifra	Dužina mm	Težina kg
27561	85	0.069
27562	100	0.082

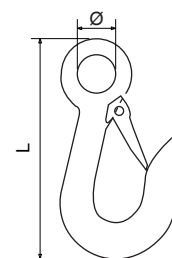
Materijal: mekani čelik  
Završn obrada: Zeleno lakiran,  
Vruće cinčano.



### KARABINER KUKA G-3315

Kovani čelik  
Elektro cinčano

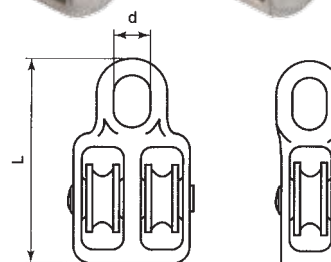
Šifra	Veličina (in)	Dimenzije (in)		Min. prek. sila lbs	Nosivost lbs
		L	Ø		
27571	7/16	3.94	0.75	750	0.24
27572	9/16	4.75	1.13	1000	0.50



### KOLOTURE

MATERIJAL TIJELA: LEGIRANI ČELIK, ZN  
MATERIJAL KOTAČA: NAJLON

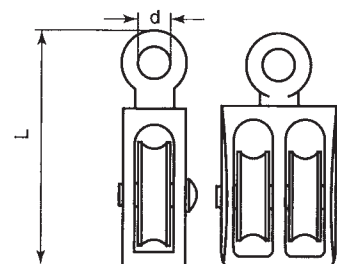
Šifra	Veličina mm	d mm	L mm	Kotači
28251	502-15	9.5	50	Jednostruki
28252	502-20	11.4	60	
28253	502-25	12	70	
28253A	502-30	13	76	
28254	502-40	16.5	90	
28255	502-50	17	110	
28257	502-65	18.5	135	
28258	504-15	9.5	50	Dvostruki
28259	504-20	11.4	60	
28260	504-25	12	70	
28261	504-30	13	7	
28262	504-40	16.5	90	
28263	504-50	17	110	



### KOLOTURE

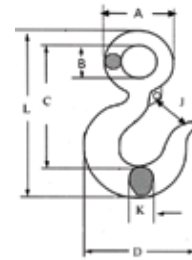
MATERIJAL: LEGIRANI ČELIK, ZN

Šifra	Veličina mm	d mm	L mm
28301	1/2	5	41
28302	3/4	5	41
28303	1	6.5	54
28304	1-1/4	10	76.5
28305	1-1/2	10	76.5
28306	2	13	98.5



### KUKA 320C / 320A

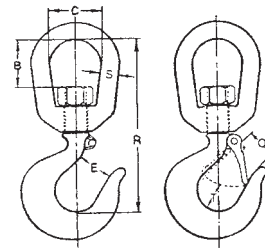
- Lijevani / Kovani čelik
- Ispitana sila 2 x nosivost
- Prekidna sila 5 x nosivost
- 320C - Ugljični čelik
- 320A - Legirani čelik



Šifra	Nosivost (t)		DIMENZIJE(mm)							Težina (kg/kom)
	320C	320A	A	B	D	J	K	L	C	
25421	0.75	1	37	19	73	24	14	110	82	0.25
25422	1	1.5	44	23	81	26	15	125	93	0.34
25423	1.5	2	51	28	92	27	19	140	100	0.56
25424	2	3	61	32	104	30	21	160	120	0.76
25425	3	4.5	75	40	125	38	28	200	145	1.62
25426	5	7	97	50	165	48	35	255	187	3.20
25427	7.5	11	119	62	190	57	40	315	230	5.85
25428	10	15	136	72	210	68	56	357	258	9.75
25429	15	22	168	90	262	88	68	434	318	17.00

### KUKA OKRETNA 322C / 322A

- Lijevani / Kovani čelik
- Ispitana sila 2 x nosivost
- Prekidna sila 5 x nosivost
- 322C - Ugljični čelik
- 322A - kuka - legirani čelik,  
- prsten - ugljični čelik



Šifra	Nosivost (t)		DIMENZIJE (mm)						
	322C	322A	B	C	O	R	S	T	O
25501	0.75	1	21	31	22	115	10	20	22
25502	1	1.5	32	38	23	136	13	20	24.5
25503	1.5	2	38	45	25	155	16	21	25
25504	2	3	40	45	28	165	16	30	28.5
25505	3	4.5	42	50	35	190	19	35	34
25506	5	7	58	63	40	245	25	45	49
25507	7.5	11	60	70	53	283	29	54	52
25508	10	15	63	80	58	304	32	63.5	57

# PRIBOR

## ŠUMARSKI PRIBOR

### ŠUMARSKA OMČA, ŠUMARSKI LANAC

- ŠUMARSKA OMČA
- Debljina užeta: 10mm, 12mm, 14mm
- Dužina: po narudžbi

- ŠUMARSKI LANAC
- Debljina lanca: 7mm, 8mm, 10mm
- Dužina: po narudžbi



### KLIZAČI, ČOKERI



KLIZAČ GLAVNOG  
UŽETA "VELIKI"  
RAVNO KOPČANJE



KLIZAČ GLAVNOG  
UŽETA "MALI"  
RAVNO KOPČANJE



KLIZAČ GLAVNOG  
UŽETA  
BOČNO KOPČANJE



KLIZAČ ZA ŠUMARSKE  
OMČE  
"MICRO" I "MIDGET"



KLIZAČI ŠUMARSKOG LANCA



SPOJNICA ZA  
KRPANJE  
TRAKTORSKOG LANCA



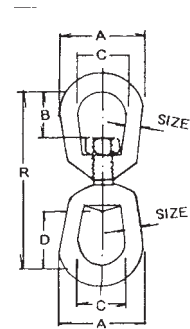
# PRIBOR

## VRTULJCI

Šifra	Nosivost		Dimenzije (in)				
	in	LBS	A	B	C	D	R
29001	1/4	850	1-1/4	11/16	3/4	1-1/16	2-15/16
29002	5/16	1250	1-5/8	13/16	1	1-1/4	3-9/16
29003	3/8	2250	2	15/16	1-1/4	1-1/2	4-5/16
29004	1/2	3600	2-1/2	1-5/16	1-1/2	2	5-7/16
29005	5/8	5200	3	1-9/16	1-3/4	2-3/8	6-9/16
29006	3/4	7200	3-1/2	1-3/4	2	2-5/8	7-3/16
29007	7/8	10000	4	2-1/16	2-1/4	3-1/16	8-3/16
29008	1	12500	4-1/2	2-5/16	2-1/2	3-1/2	9-5/8
29009	1-1/8	15200	5	2-3/8	2-3/4	3-3/4	10-3/8
29010	1-1/4	18000	5-5/8	2-11/16	3-1/8	4-1/16	11-1/8
29011	1-1/2	45200	7	4-3/16	4	4-3/16	17-1/8

### VRTULJAK OKRETNI OKO - OKO

VRUČE CINČANI  
G-402

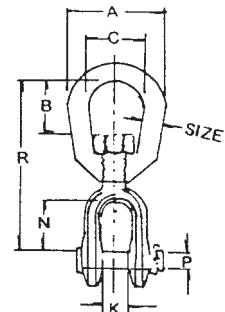


PRIBOR

Šifra	Nosivost		Dimenzije (in)						
	in	LBS	A	B	C	K	N	P	R
29051	1/4	850	1-1/4	11/16	3/4	15/32	7/8	1/4	2-5/8
29052	5/16	1250	1-5/8	13/16	1	1/2	7/8	5/16	2-15/16
29053	3/8	2250	2	15/16	1-1/4	5/8	1-1/16	3/8	3-5/8
29054	1/2	3600	2-1/2	1-5/16	1-1/2	3/4	1-5/16	1/2	4-1/2
29055	5/8	5200	3	1-9/16	1-3/4	15/16	1-1/2	5/8	5-5/16
29056	3/4	7200	3-1/2	1-3/4	2	1-1/8	1-3/4	3/4	6-1/16
29057	7/8	10000	4	2-1/16	2-1/4	1-3/16	2-1/16	7/8	7
29058	1	12500	4-1/2	2-5/16	2-1/2	1-3/4	2-13/16	1-1/8	8-9/16
29059	1-1/8	15200	5	2-3/8	2-3/4	1-3/4	2-13/16	1-1/8	8-15/16
29060	1-1/4	18000	5-5/8	2-11/16	3-1/8	2-1/6	2-13/16	1-3/8	9-7/16
29061	1-1/2	45200	7	4-3/16	4	2-7/8	4-7/16	2-1/4	14-3/4

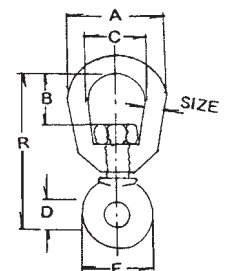
### VRTULJAK OKRETNI OKO - VILICA

VRUČE CINČANI  
G-403



### VRTULJAK OKRETNI OKO - OKO

VRUČE CINČANI  
G-401



Šifra	Nosivost		Dimenzije (in)					
	in	LBS	A	B	C	D	E	R
29101	1/4	850	1-1/4	11/16	3/4	7/15	15/16	2-1/4
29102	5/16	1250	1-5/8	13/16	1	1/2	1-1/8	2-23/32
29103	3/8	2250	2	15/16	1-1/4	3/4	1-1/2	3-7/16
29104	1/2	3600	2-1/2	1-5/16	1-1/2	7/8	1-7/8	4-1/4
29105	5/8	5200	3	1-9/16	1-3/4	1-1/16	2-3/16	5-1/8
29106	3/4	7200	3-1/2	1-3/4	2	1-1/4	2-5/8	5-25/32

### UŽNI ZATVARAČ DIN 15315 (EN13411-7)

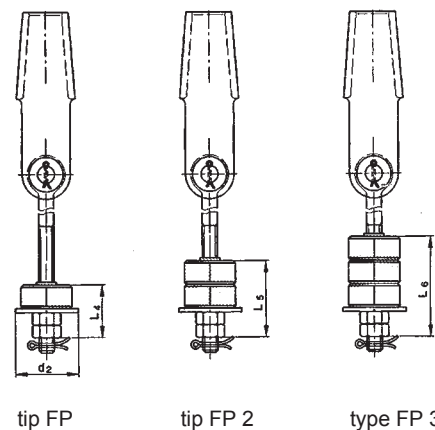
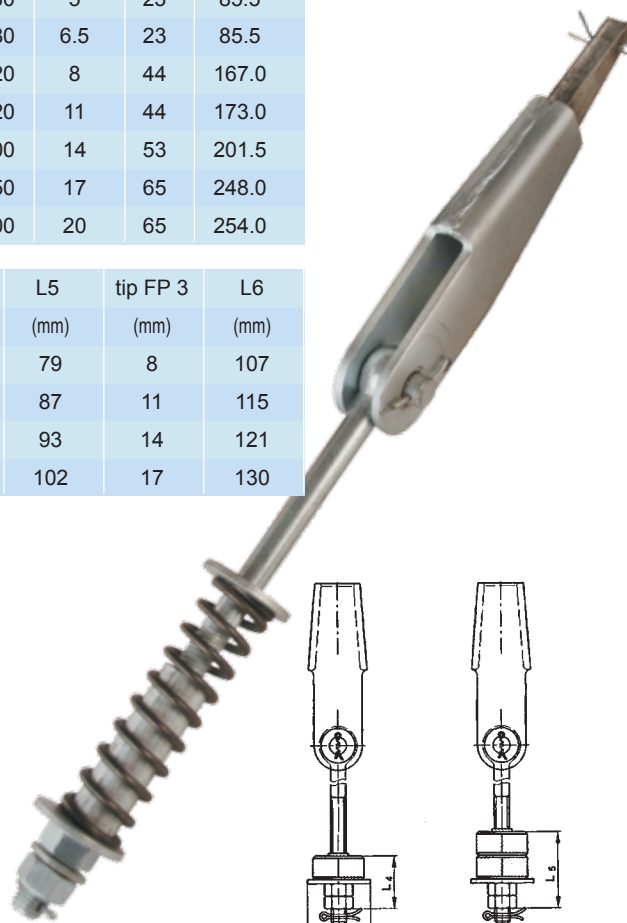
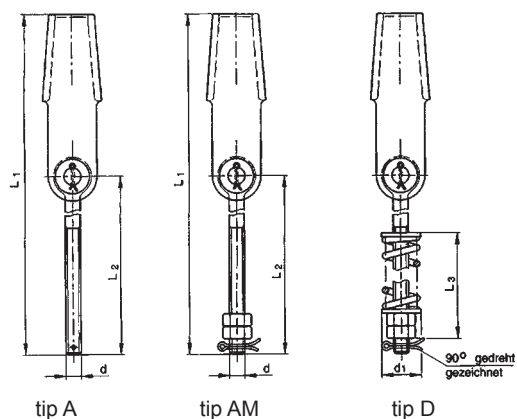


Šifra	Veličina	Za uže-Ø	Dimenzije (mm)					
			h1	w	b	d	e	h2
17061	5.0	4 - 5	68	19	12	10	14	110
17062	6.5	5 - 6.5	58	19	15	10	16	100
17063	8.0	6 - 8	92	25	14	12	20	150
17064	11.0	9 - 11	117	32	17	16	26	190
17065	14.0	12 - 14	141	38	22	18	32	230
17066	17.0	15 - 17	162	46	25	22	36	260
17067	20.0	18 - 20	186	52	27	25	40	300
17068	25.0	22 - 25	180	60	40	42	40	285
17069	30.0	26 - 30	182	62	55	52	55	335

### UŽNI ZATVARAČ ZA UŽE ZA LIFT DIN 15315 (EN13411-7)

Šifra	Za uže Ø (mm)	tip A (mm)	tip AM (mm)	d (mm)	L 1 (mm)	L2 (mm)	tip D size(mm)	d 1 (mm)	L3 (mm)
			5	M 10	276	180	5	23	85.5
17071	5-6.5	6.5	6.5	M 10	265	180	6.5	23	85.5
17072	6-8	8	8	M 12	450	320	8	44	167.0
17073	9-11	11	11	M 16	484	320	11	44	173.0
17074	12-14	14	14	M 20	598	400	14	53	201.5
17075	15-17	17	17	M 24	674	450	17	65	248.0
17076	18-20	20	20	M27	760	500	20	65	254.0

Šifra	Za uže Ø (mm)	tip FP (mm)	d2 (mm)	L4 (mm)	tip FP 2 (mm)	L5 (mm)	tip FP 3 (mm)	L6 (mm)
17078	6-8	8	50	51	8	79	8	107
17079	9-11	11	58	59	11	87	11	115
17080	12-14	14	68	65	14	93	14	121
17081	15-17	17	80	74	17	102	17	130



# PRIBOR

## KLIJEŠTA / STEZAČI

### KLIJEŠTA ZA REZANJE ČEL. UŽETA

- Rezni nož proizveden od visokokvalitetnog čelika
- Za rezanje čelične užadi, čelične žice i kablova

Šifra	Veličina	Uže (mm)
17201	8"	Ø5
17202	18"	Ø12
17203	24"	Ø16
17204	36"	Ø20
17205	42"	Ø24



### KLIJEŠTA ZA REZANJE I UPREŠAVANJE

- Rezni nož proizveden od visokokvalitetnog čelika
- Za rezanje čeličnog užeta do 6mm i uprešavanje čeličnog užeta sa aluminijskom klemom od 1.5 - 5mm



Šifra	Veličina (in)	Mekani materijal	Tvrđi materijal
17211	14"	3.5(mm)	4/16"
17212	24"	5(mm)	3/16"

### HIDRAULIČNA KLIJEŠTA ZA REZANJE ČELIČNOG UŽETA

Hidraulična kliješta za rezanje čeličnog užeta su profesionalna prenosiva kliješta koja se mogu koristiti u svim područjima gdje se koristi čelična užad (građevinarstvo, brodogradnja, ribarstvo, šumarstvo itd.) debljine čak do 50 mm.

Šifra	Raspon rezanja	Dužina oštrice	Vrijeme rezanja	Dimenzija pumpe	Snaga na ručki	Snaga rezanja
01318A	10-32mm	30mm	25sekundi	12mm	300N	7.5 ton
01319A	8-40mm	63mm	40sekundi	12mm	400N	20 ton
01320A	8-50mm	63mm	40sekundi	12mm	400N	20 ton



### STEZAČ ZA POVLAČENJE ČEL. UŽETA

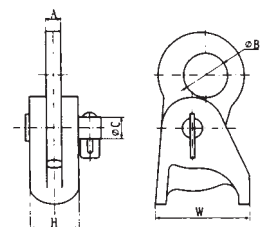


Stezač je idealan za stezanje, povlačenje i napinjanje čeličnog užeta, čeličnog kablova i žice.

- Preporučljivo je koristiti stezač u kombinaciji sa nekom povlačnom dizalicom (Tirfor, Čekrk itd...)

Šifra	Snaga povlačenja kgs	Otvor za uže mm
17231	500	1-10
17232	1000	2.6-15
17233	2000	4.0-22
17234	3000	16-32

### STEZAČ ZA POVLAČENJE ČEL. UŽETA

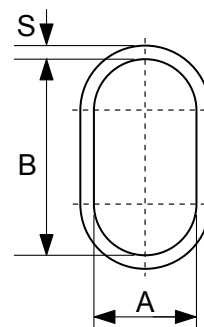
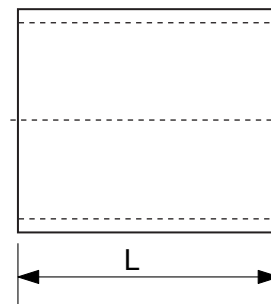


Šifra	Snaga povl.(t)	Za uže mm	Dimenzije (mm)				
			A	B	C	H	W
17251	0.5	4-6	9	33	16	24	58
17252	1	8-10	11	34	16	34	67
17253	2	12-14	17	40	24	42	88
17254	3	16-20	25	48	32	62	130
17255	5	22-26	30	52	36	67	140
17256	6	28-32	32	52	36	76	140

Šifra	Veličina	A mm	B mm	S mm	L mm	Težina g
17001	1	1.2	2.4	0.65	5	0.094
17002	1.5	1.7	3.4	0.75	6	0.211
17003	2	2.2	4.4	0.85	7	0.375
17004	2.5	2.7	5.4	1.05	9	0.499
17005	3	3.3	6.6	1.25	11	0.843
17006	3.5	3.8	7.6	1.5	13	1.32
17007	4	4.4	8.8	1.7	14	1.81
17008	4.5	4.9	9.8	1.9	16	2.61
17009	5	5.5	11.0	2.1	18	3.57
17010	6	6.6	13.2	2.5	21	5.86
17011	6.5	7.2	14.4	2.7	23	7.55
17012	7	7.8	15.6	2.9	25	9.50
17013	8	8.8	17.6	3.3	28	13.7
17014	9	9.9	19.8	3.7	32	19.8
17015	10	10.9	21.8	4.1	35	26.4
17016	11	12.1	24.2	4.5	39	35.8
17017	12	13.2	26.4	4.9	42	45.8
17018	13	14.2	28.4	5.4	46	59.7
17019	14	15.3	30.6	5.8	49	73.5
17020	16	17.5	35.0	6.7	56	111
17021	18	19.6	39.2	7.6	63	156
17022	20	21.7	43.4	8.4	70	217
17023	22	24.3	48.6	9.2	77	292
17024	24	26.4	52.8	10.0	84	376
17025	26	28.5	57.0	10.9	91	481
17026	28	31.0	62.0	11.7	98	603
17027	30	33.1	66.2	12.5	105	739
17028	32	35.2	70.4	13.4	112	897
17029	34	37.8	75.6	14.2	119	1077
17030	36	39.8	79.6	15.0	126	1275
17031	38	41.9	83.8	15.8	133	1503
17032	40	44.0	88.0	16.6	140	1734
17033	42	46.2	92.4	17.5	147	2024
17034	44	48.4	96.8	18.3	154	2314
17035	46	50.6	101.2	19.2	161	2662
17036	48	52.8	105.6	20.0	168	3010
17037	50	55.0	110.0	20.8	175	3412
17038	52	57.2	114.4	21.6	182	3813
17039	54	59.4	118.8	22.5	189	4293
17040	56	61.6	123.2	23.3	196	4772
17041	58	63.8	127.6	24.2	203	5326
17042	60	66.0	132.0	25.0	210	5880

### ALUMINIJSKA CAHURA DIN 3093

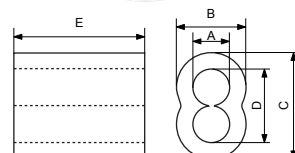
Tip A

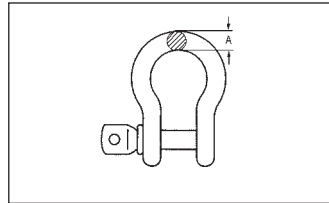


PRIBOR

Šifra	Veličina	Za užje (mm)	Unutar. šir. A(mm)	Vanjsk. šir. B(mm)	Unutar. visina C(mm)	Vanjsk. visina D(mm)	Dužina E(mm)	Težina kg
17045	inch							
17046	1/16"	1.60	1.98	4.37	6.35	4.00	9.60	0.00040
17047	5/64"	2.00	2.39	5.56	7.95	4.80	9.60	0.00070
17048	3/32"	2.40	3.30	7.06	10.26	6.50	12.70	0.00150
17049	1/8"	3.20	3.96	8.71	12.70	7.90	15.90	0.00290
17050	5/32"	4.00	4.75	9.53	14.28	9.50	17.50	0.00360
17051	3/16"	5.10	5.66	11.20	16.89	11.40	25.40	0.00700
17052	7/32"	5.60	6.35	12.70	19.05	12.70	27.00	0.01000
17053	1/4"	6.40	7.37	13.61	20.78	14.60	28.60	0.01100
17054	9/32"	7.10	7.92	14.27	22.35	16.00	30.20	0.01300
17055	5/16"	8.00	9.53	17.45	26.19	18.30	31.70	0.02100
17056	3/8"	9.50	11.13	9.05	29.36	21.40	36.50	0.02700
17057	7/16"	11.10	12.70	23.08	36.50	25.40	42.80	0.05300
17058	1/2"	12.70	14.27	27.00	41.28	28.50	50.80	0.08000

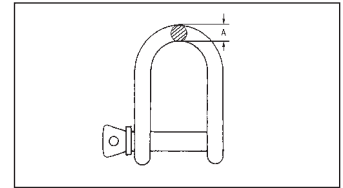
### ALUMINIJSKA CAHURA





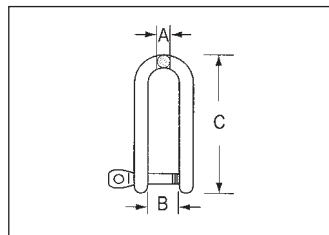
Šifra	Veličina		A
	mm	inch	mm
21051S	5	3/16	5
21052S	6	1/4	6
21053S	8	5/16	8
21054S	10	3/8	10
21056S	12	1/2	12
21058S	16	5/8	16
21060S	19	3/4	19
21061S	22	7/8	22
21062S	25	1	25

**ŠKOPAC TRBUŠASTI  
KOMERCIJALNI**  
AISI:304 / 316



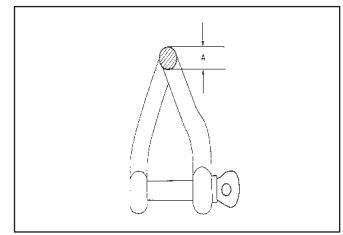
Šifra	Veličina		A
	mm	inch	mm
21002S	5	3/16	5
21003S	6	1/4	6
21004S	8	5/16	8
21005S	10	3/8	10
21007S	12	1/2	12
21009S	16	5/8	16

**ŠKOPAC RAVNI  
KOMERCIJALNI**  
AISI :304 / 316



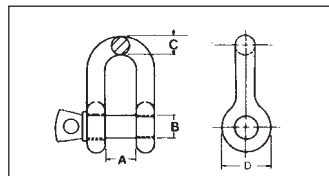
ITEM NO	SIZE	A	B	C
	mm	mm	mm	mm
21651S	4	4	8	30
21652S	5	5	10	38
21653S	6	6	12	45
21654S	8	8	16	62
21655S	10	10	20	75
21656S	12	12	24	90
21657S	16	16	32	120

**ŠKOPAC RAVNI - DUGI**  
AISI:304 / 316



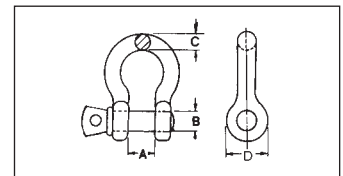
Šifra	Veličina		A
	mm	inch	mm
21701S	5	3/16	5
21702S	6	1/4	6
21703S	8	5/16	8
21704S	10	3/8	10
21705S	12	1/2	12

**ŠKOPAC UVINUTI**  
AISI:304 / 316



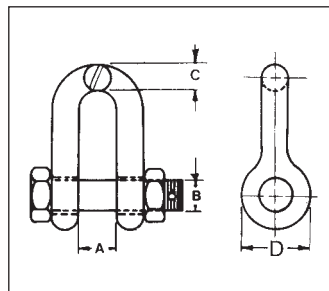
Šifra	Dimenzija (in.)				
	Veličina A (in.)	B	C	D	
21101S	1/4	.47	.31	.25	.61
21102S	5/16	.53	.38	.31	.75
21103S	3/8	.66	.44	.38	.91
21104S	7/16	.75	.50	.44	1.06
21105S	1/2	.81	.63	.50	1.19
21106S	5/8	1.06	.75	.62	1.50
21107S	3/4	1.25	.88	.81	1.81
21108S	7/8	1.44	1.00	.97	2.09
21109S	1	1.69	1.13	1.00	2.38

**ŠKOPAC RAVNI  
U. S TIP**  
AISI:304 / 316



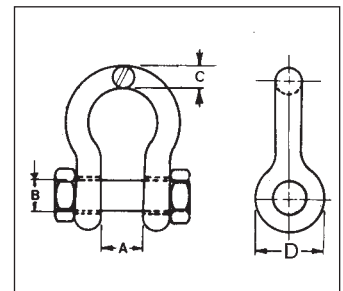
Šifra	Dimenzije (in.)				
	Veličina A(in.)	B	C	D	
21151S	3/16	.38	.25	.19	.56
21152S	1/4	.47	.31	.25	.61
21153S	5/16	.53	.38	.31	.75
21154S	3/8	.66	.44	.38	.91
21155S	7/16	.75	.50	.44	1.06
21156S	1/2	.81	.63	.50	1.19
21157S	5/8	1.06	.75	.69	1.50
21158S	3/4	1.25	.88	.81	1.81
21159S	7/8	1.44	1.00	.97	2.09
21160S	1	1.69	1.13	1.06	2.38

**ŠKOPAC TRBUŠASTI  
U. S TIP**  
AISI:304 / 316



Šifra	Veličina		Dimenzije (in.)		
	(in.)	A	B	C	D
21235S	1/2	.81	.63	.50	1.19
21236S	5/8	1.06	.75	.69	1.50
21237S	3/4	1.25	.86	.81	1.81
21238S	7/8	1.44	1.00	.97	2.09
21239S	1	1.69	1.13	1.06	2.36

**ŠKOPAC RAVNI  
SA MATICOM - U.S TIP**  
AISI :304 / 316

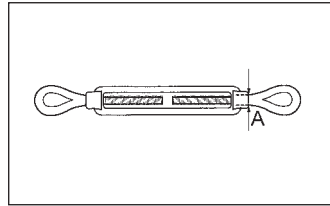


Šifra	Veličina		Dimenzije (in.)		
	(in.)	A	B	C	D
21206S	1/2	.81	.63	.50	1.19
21207S	5/8	1.06	.75	.69	1.50
21208S	3/4	1.25	.86	.81	1.81
21209S	7/8	1.44	1.00	.97	2.09
21210S	1	1.69	1.13	1.06	2.36

**ŠKOPAC TRBUŠASTI  
SA MATICOM - U. S TIP**  
AISI:304 / 316

# PRIBOR

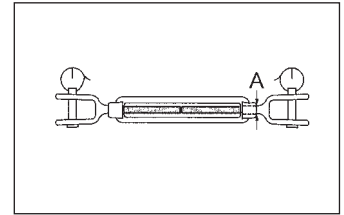
## INOX PRIBOR - AISI 304 / 316



Šifra	Veličina		A
	mm	inch	
24001S	6	1/4	6.35
24002S	8	5/16	7.94
24003S	10	3/8	9.53
24004S	12	1/2	12.7
24007S	16	5/8	15.9
24010S	19	3/4	19.1

**ZATEZNICA U.S. TIP  
OKO - OKO**

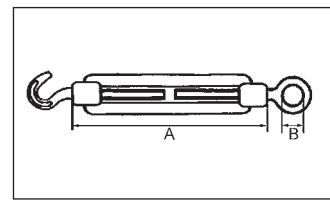
AISI :304 / 316



Šifra	Veličina		A
	mm	inch	
24501S	6	1/4	6.35
24502S	8	5/16	7.94
24503S	10	3/8	9.53
24504S	12	1/2	12.7
24505S	16	5/8	15.9
24506S	19	3/4	19.1

**ZATEZNICA U.S.  
VILICA - VILICA**

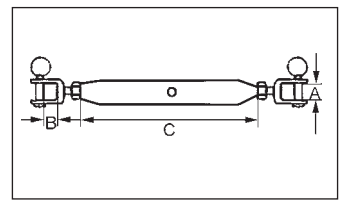
AISI: 304 / 316



Šifra	Veličina mm	A mm	B mm
24152S	6	110	9
24153S	8	110	10
24154S	10	125	14
24156S	12	125	16
24157S	14	140	18
24158S	16	170	22
24159S	20	200	24

**NATEZNI VIJAK DIN 1480  
KUKA - OKO**

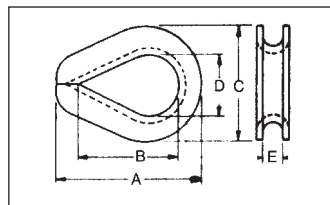
AISI:304 / 316



Šifra	Veličina mm	A mm	B mm	C mm
24101S	M6	7.5	10	95
24102S	M8	10	11	105
24103S	M10	12	13	125
24104S	M12	14	20	150
24105S	M16	16	26	190
24106S	M20	20	30	210

**ZATEZNICA CIJEVNA  
VILICA - VILICA**

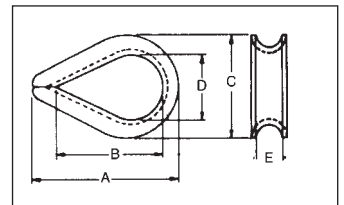
AISI: 304 / 316



Šifra	Uže (IN.)	Dimenzije (in.)				
		A	B	C	D	E
23301S	1/4	2.19	1.63	1.50	.88	.28
23302S	5/16	2.50	1.88	1.81	1.06	.34
23303S	3/8	2.88	2.13	2.13	1.13	.41
23305S	1/2	3.63	2.75	2.75	1.50	.53
23307S	5/8	4.25	3.25	3.13	1.75	.66
23308S	3/4	5.00	3.75	3.81	2.00	.78
23309S	7/8	5.50	4.25	4.25	2.25	.94
23310S	1	6.13	4.50	4.94	2.50	1.06

**JEZGRA - TEŠKA  
U. S TIP**

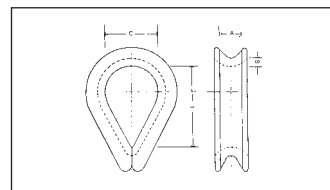
AISI:304 / 316



ITEM NO	Uže (IN.)	Dimenzije(in.)				
		A	B	C	D	E
23201S	1/8	1.94	1.31	1.06	.69	.16
23202S	3/16	1.94	1.31	1.06	.69	.22
23203S	1/4	1.94	1.31	1.06	.69	.28
23204S	5/16	2.13	1.50	1.25	.81	.34
23205S	3/8	2.38	1.63	1.47	.94	.41
23206S	1/2	2.75	1.88	1.75	1.13	.53
23207S	5/8	3.50	2.25	2.38	1.38	.66
23208S	3/4	3.75	2.50	2.69	1.63	.78

**JEZGRA  
U.S. TIP**

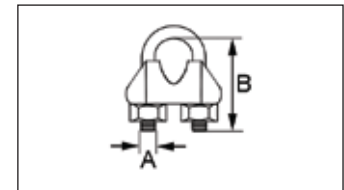
AISI:304 / 316



Šifra	A mm	B mm	C mm
23052S	4	11	17
23053S	5	13	20
23054S	6	16	25
23055S	7	18	28
23056S	8	20	32
23057S	10	26	40
23058S	12	28	45
23059S	14	34	56
23060S	16	37	62

**JEZGRA  
EUROPSKI TIP**

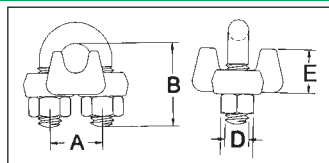
AISI :304 / 316



Šifra	Uže mm	Veličina inch	A mm	B mm
22102S	5	3/16	5	19.65
22103S	6	1/4	5	23.65
22104S	8	5/16	6	28.85
22105S	10	3/8	8	35.00
22106S	12	1/2	8	37.00
22108S	14	9/16	10	48.24
22109S	16	5/8	12	52.50

**STEZALJKA DIN 741**

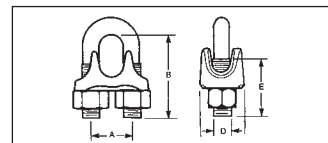
AISI:304 / 316



Šifra	Veličina	Dimenzije in			
		A	B	D	E
22401S	1/8"	.47	.72	.22	.41
22402S	3/16"	.59	.97	.25	.50
22403S	1/4"	.75	1.03	.31	.66
22404S	5/16"	.88	1.38	.38	.72
22405S	3/8"	1.00	1.50	.44	.91
22406S	7/16"	1.19	1.88	.50	1.03
22407S	1/2"	1.19	1.88	.50	1.13
22408S	9/16"	1.31	2.25	.56	1.22
22409S	5/8"	1.31	2.38	.56	1.34
22410S	3/4"	1.50	2.75	.62	1.41
22411S	7/8"	1.75	3.12	.75	1.59
22412S	1"	1.88	3.50	.75	1.78

**STEZALJKA  
U.S. TIP**

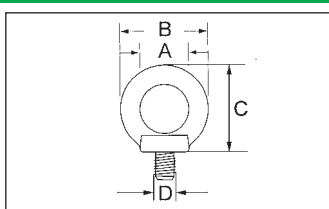
AISI :304 or 316



Šifra	Uže (in)	Dimenzije (in.)			
		A	B	D	E
22372S	1/8	.50	.81	.18	.45
22373S	3/16	.56	.94	.25	.50
22374S	1/4	.75	1.19	.31	.56
22375S	5/16	.75	1.31	.31	.75
22376S	3/8	.88	1.63	.38	.84
22377S	7/16	1.06	2.00	.44	1.00
22378S	1/2	1.06	2.00	.44	1.19
22379S	9/16	1.25	2.31	.50	1.19
22380S	5/8	1.25	2.31	.50	1.38
22381S	3/4	1.31	2.56	.56	1.38
22382S	7/8	1.63	3.06	.63	1.56
22383S	1	1.88	3.44	.63	1.81

**STEZALJKA**

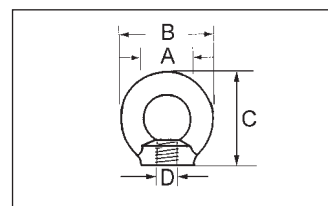
AISI :304 or 316



Šifra	Veličina mm	A mm	B mm	C mm
26151S	6	20	36	36
26152S	8	20	36	36
26153S	10	25	45	45
26154S	12	30	54	53
26156S	16	35	63	62
26158S	20	40	72	71
26160S	24	50	90	90

**OČNI VIJAK DIN 582**

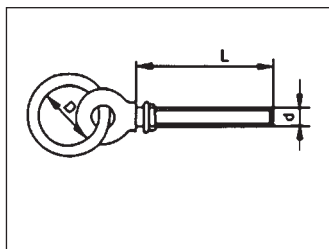
AISI:304 or 316



Šifra	Veličina mm	A mm	B mm	C mm
26201S	6	20	36	36
26202S	8	20	36	36
26203S	10	25	45	45
26204S	12	30	54	53
26206S	16	35	63	62
26208S	20	40	72	71
26210S	24	50	90	90

**OČNA MATICA DIN 582**

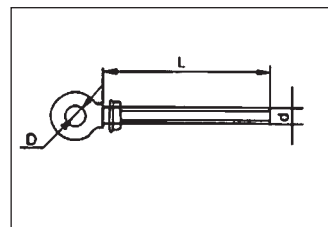
AISI:304 or 316



Šifra	Veličina mm	d mm	D mm	L mm
28301S	6x6x35	M6	35	60
28302S	8x8x45	M8	45	60
28303S	10x10x50	M10	50	95
28304S	12x12x60	M12	60	100

**OČNI VIJAK SA PRSTENOM**

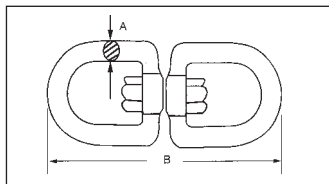
AISI:304 or 316



Šifra	Veličina mm	d mm	D mm	L mm
28311S	6x40	M6	16	40
28312S	6x60	M6	16	60
28313S	6x80	M6	16	80
28314S	6x100	M6	16	100
28315S	8x80	M8	20	80
28316S	8x100	M8	20	100
28317S	10x100	M10	24	100

**OČNI VIJAK  
DUGI SA MATICOM**

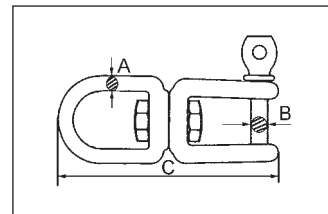
AISI: 304 or 316



Šifra	Veličina mm	A mm	B mm
28321S	5	5	59
28322S	6	6	65
28323S	8	8	90
28324S	10	10	115
28325S	12	12	152
28326S	13	13	188
28327S	16	16	229

**VRTULJAK  
OKO - OKO**

AISI :304 or 316



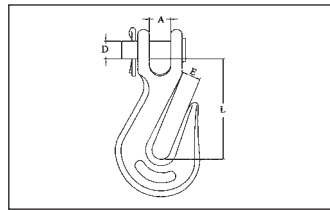
Šifra	Veličina mm	A mm	B mm	C mm
28331S	5	5	5	59
28332S	6	6	6	66
28333S	8	8	8	94
28334S	10	10	10	118
28335S	13	13	13	152
28336S	16	16	16	188
28337S	19	19	19	299

**VRTULJAK  
OKO - VILICA**

AISI:304 or 316

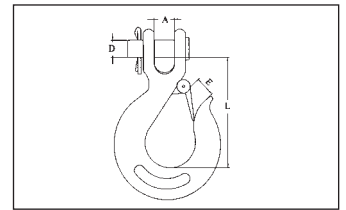
# PRIBOR

## INOX PRIBOR AISI 304 / 316



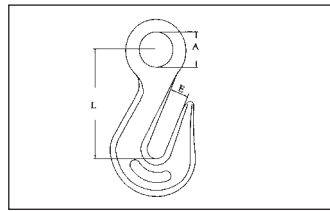
Šifra	Lanac (mm)	Nosivost (T) (mm)	D (mm)	A (mm)	E (mm)	L (mm)
25281S	6	0.75	9	11	9	46
25282S	8	1	11	12.5	11	54
25283S	10	1.5	12	15	12	58
25284S	12	2	16	18	16	74

**KUKA SKRAČIVAČ - V**  
AISI:304 / 316



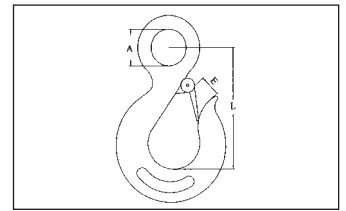
Šifra	Lanac (mm)	Nosivost (Lbs)	D (mm)	A (mm)	L (mm)	E (mm)
25301S	6	1000	9	11	60	15
25302S	8	1500	11	12.5	65	16
25303S	10	2000	12	15	80	18
25305S	12	3000	16	18	87	24

**KUKA ZA LANAC**  
AISI :304 / 316



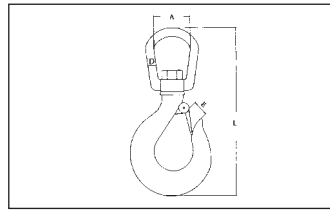
Šifra	Lanac (mm)	Nosivost (Lbs)	A (mm)	E (mm)	L (mm)
25321S	6	1500	13	9	43
25322S	8	2000	16	11	51
25323S	10	2500	18	12	56
25324S	12	3600	23	16	75

**KUKA SKRAČIVAČ - O**  
AISI:304 / 316



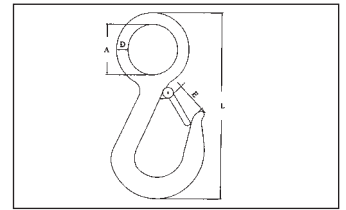
Šifra	Lanac (mm)	Nosivost (Lbs)	A (mm)	L (mm)	E (mm)
25341S	6	1000	13	57	15
25342S	8	1500	16	65	16
25343S	10	2000	18	76	18
25345S	12	3000	23	95	24

**KUKA SA OKOM**  
AISI:304 / 316



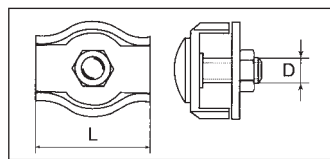
Šifra	Nosivost (lbs)	L (mm)	E (mm)	D (mm)	A (mm)
28356S	770	4"	0.67"	0.26"	0.87"
28357S	1430	5"	0.78"	0.32"	1.10"
28358S	2200	6"	0.77"	0.38"	1.10"
28359S	3300	8"	1.18"	0.50"	1.42"

**KUKA OKRETNJA**  
AISI:304 / 316



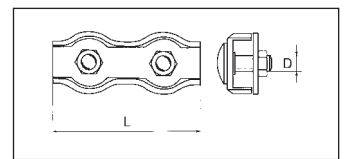
Šifra	Nosivost (T) (mm)	A (mm)	D (mm)	L (mm)	E (mm)
28378S	0.3	19	8	100	16
28379S	0.5	28	10	120	22

**KUKA SA VELIKIM OKOM**  
AISI:304 / 316



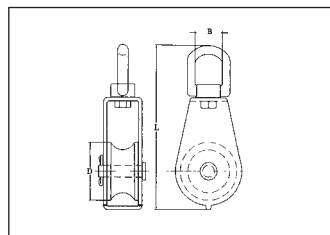
Šifra	Veličina (mm)	L	D
23351S	2	18.5	M4
23352S	3	20	M4
23353S	4	22.5	M5
23354S	5	26	M6
23355S	6	30	M6
23356S	8	36	M8
23357S	10	42	M10

**STEZALJKA SIMPLEX**  
AISI :304 / 316



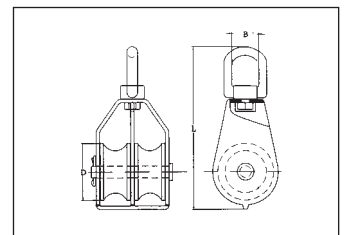
Šifra	Veličina (mm)	L	D
23351DS	2	37	M4
23352DS	3	40	M4
23353DS	4	45	M5
23354DS	5	52	M6
23355DS	6	60	M6
23356DS	8	72	M8
23357DS	10	84	M10

**STEZALJKA DUPLEX**  
AISI:304 / 316



Šifra	Nosivost (T) (mm)	D (mm)	Uže (mm)	L (mm)	B (mm)
28307S	0.15	25	6	83	15
28308S	0.25	32	8	97	16
28309S	0.4	50	10	127	20

**KOLOATURA OKRETNJA JEDNOSTRUKA**  
AISI :304 / 316

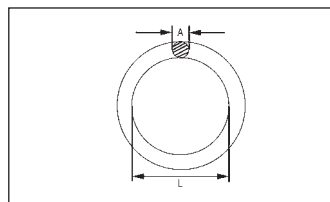


Šifra	Nosivost (T) (mm)	D (mm)	Uže (mm)	L (mm)	B (mm)
28375S	0.15	25	6	83	15
28376S	0.25	32	8	97	16
28377S	0.4	50	10	127	20

**KOLOATURA OKRETNJA DVOSTRUKA**  
AISI:304 / 316

PRIBOR

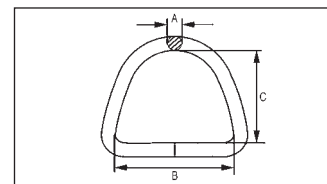




O RING

AISI: 304 / 316

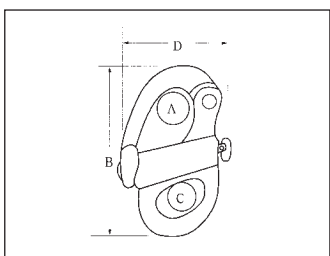
Šifra	A mm	L mm	Šifra	A mm	L mm
28341S	3	25	28349S	6	50
28342S	4	25	28350S	6	60
28343S	4	30	28351S	7	35
28344S	5	30	28352S	8	40
28345S	5	40	28353S	8	50
28346S	5	50	28354S	10	50
28347S	6	30	28355S	10	70
28348S	6	40			



D RING

AISI: 304 / 316

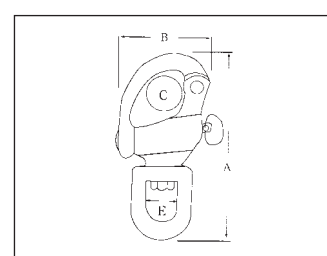
Šifra	A mm	B mm	C mm
28361S	3	25	22
28362S	4	25	22
28363S	4	30	27
28364S	5	30	27
28365S	5	40	37
28366S	6	40	37
28367S	6	50	47
28368S	8	40	37
28369S	8	50	47
28370S	10	50	47



KARABINER ŠKOPAC

AISI:304 / 316

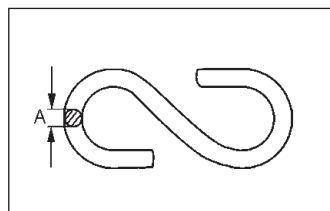
Šifra	Veličina mm	A mm	B mm	C mm	D mm
28381S	12	12	54	10	33
28382S	16	16	70	12	40
28383S	22	22	95	16	60



KARABINER ŠKOPAC OKRETNI

AISI:304 / 316

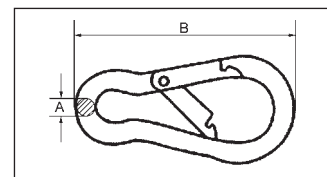
Šifra	Veličina mm	A mm	B mm	C mm	E mm
28391S	12	70	32	12	12
28392S	16	87	40	16	16
28393S	22	128	50	22	22



S KUKA

AISI:304 / 316

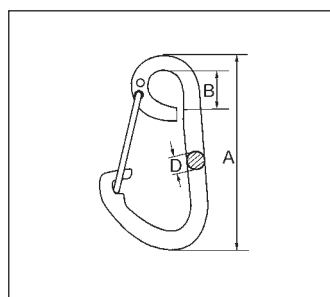
Šifra	Veličina mm	A mm
27251S	3	3
27252S	4	4
27253S	5	5
27254S	6	6
27256S	8	8



KARABINER

AISI :304 / 316

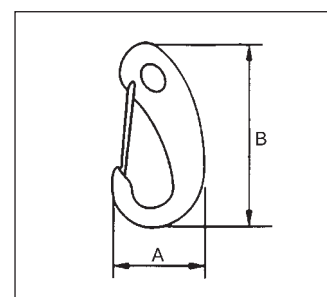
Šifra	Veličina mm	A mm	B mm
27001S	4x40	4	40
27002S	5x50	5	50
27003S	6x60	6	60
27004S	7x70	7	70
27005S	8x80	8	80
27006S	9x90	9	90
27007S	10x100	10	100
27008S	11x120	11	120
27009S	12x140	12	140
27010S	13x160	13	160



KARABINER SA ŽIČANIM OSIGURAČEM

AISI :304 / 316

Šifra	Veličina mm	A mm	B mm	D mm
27441S	5	50	6	5
27442S	6	60	9	6
27443S	8	80	12	8
27444S	10	100	15	10
27445S	12	120	18	12



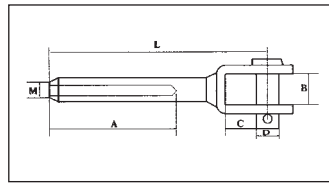
KUKA SA ŽIČANIM OSIGURAČEM

AISI :304 / 316

Šifra	Veličina mm	A mm	B mm
27461S	50	25	50
27462S	70	33	70
27463S	100	50	100

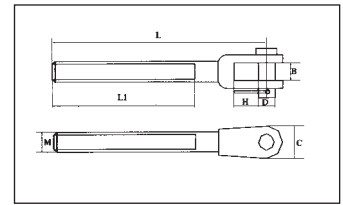
# PRIBOR

## INOX PRIBOR AISI 304 / 316



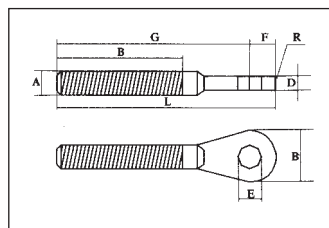
Šifra	Uže-φ	L	A	B	C	D
	mm	mm	mm	mm	mm	mm
28401S	2.5	55	24	6	9	5.2
28402S	3	65	32	7.5	10	5.2
28403S	4	77	40	10	11	6.2
28404S	5	88	57	12	13	8.7
28405S	6	106	63	14	20	9.7
28406S	7	116	70	14.5	22	12.6
28407S	8	145	85	16	26	14.6
28408S	9	150	87	17	30	16.5
28409S	10	150	89	17	30	16.5

**ZAVRŠETAK ČEL. UŽETA SA VILICOM**  
AISI: 304 / 316



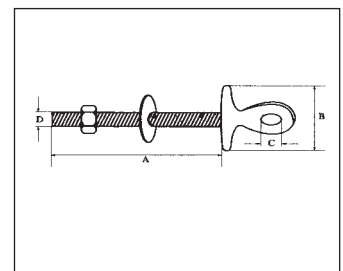
Šifra	Veličina	L	L1	H	B	C	D
	mm	mm	mm	mm	mm	mm	mm
28411S	M5	60.5	41	9	6	12	5.2
28412S	M6	72.5	50	10	7.5	14	6.2
28413S	M8	79	55	11	10	17.5	8.4
28414S	M10	96	67	13	12	20	9.4
28415S	M12	118.5	81	20	14	26	12.3
28416S	M14	130	89	22	14	26	12.3
28417S	M16	154	104	26	16	36	16
28418S	M20	172	116	30	20	43	19

**ZAVRŠETAK SA VILICOM I NAVOJEM**  
AISI: 304 / 316



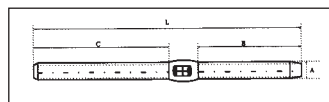
Šifra	Navoj(A)	B	C	E	F	G	H	L	R
	mm	mm	mm	mm	mm	mm	mm	mm	mm
28421S	M5	12	3	5.5	7	63	41	70	7
28422S	M6	14	4	6.5	7.5	65	47	72.5	7.5
28423S	M8	17	5	8.5	8.5	78	57	86.5	8.5
28424S	M10	22	6	10.5	12	90	63	102	12
28425S	M12	25	8	13	13	110	80	123	13
28426S	M14	28	9	13	14	124	90	138	14
28427S	M16	31	10	14.5	16	133	100	149	16

**ZAVRŠETAK SA OKOM I NAVOJEM**  
AISI: 304 / 316



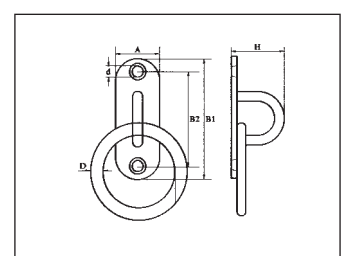
Šifra	Veličina	A	B	C	D
	mm	mm	mm	mm	mm
28431S	M6	45	15	6	6
28432S	M6	60	25	6	6
28433S	M8	70	30	8	8
28434S	M8	80	40	8	8

**ZAVRŠETAK SA OKOM I PLOČICOM**  
AISI: 304 or 316



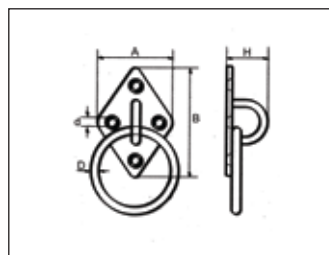
Šifra	Navoj	Uže-φ	L	A	B	C
	mm	mm	mm	mm	mm	mm
28441S	M5	2.5	70	5.5	24	38
28442S	M6	2.5	72	6.3	24	40
28443S	M6	3	80	7.5	32	40
28444S	M6	4	95	7.5	40	44
28445S	M8	4	102	9	40	52
28446S	M8	5	120	9	57	52
28447S	M10	5	130	12.5	57	63
28448S	M10	6	136	12.5	63	63
28449S	M12	6	142	14.2	63	68
28450S	M12	7	148	14.2	70	68
28451S	M14	7	160	16	70	79
28452S	M14	8	165	16	76	79
28453S	M16	8	175	17.8	76	89
28454S	M16	9	190	17.8	89	89

**ZAVRŠETAK ČEL. UŽETA SA NAVOJEM**  
AISI: 304 / 316



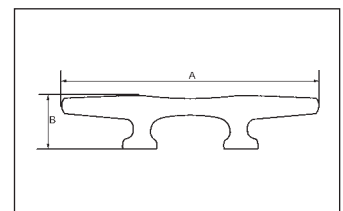
Šifra	A	B1	B2	H	d	Ring
	mm	mm	mm	mm	mm	mm
28461S	15	45	35.5	20	12	5×30
28462S	20	60	46	25	17	6×40
28463S	26	80	60	32	21	8×50
28464S	32	100	73	38	26	9×60

**BITVA SA O RINGOM**  
AISI: 304 / 316



Šifra	A	B	H	d	Ring
	mm	mm	mm	mm	mm
28471S	37	59	22	4.2	5×30
28472S	40	64	26	5.2	6×45
28473S	50	80	23	5.2	8×45

**BITVA SA O RINGOM**  
AISI: 304 / 316

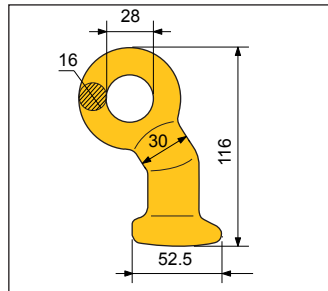


Šifra	Veličina	A	B
	inch	inch	inch
28481S	5	5	1-1/8
28482S	6	6	1-1/4
28483S	8	8	1-5/8
28484S	10	10	1-7/8
28485S	12	12	2-3/16

**BITVA**  
AISI: 304 / 316

# PRIBOR

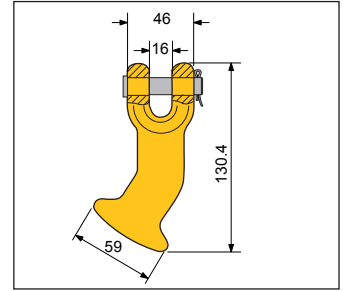
## KUKE, ZAŠTITA ZA TRAKE



Šifra br. 04356

### Kontenjska kuka sa okom

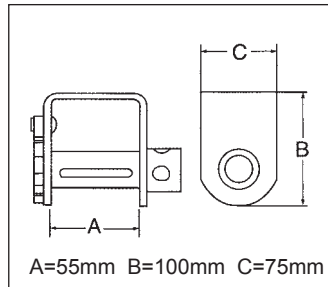
Nosivost:5000 kgs,Prekidna sila 20,000kgs  
Težina=0.67kg



Šifra br.04357

### Kontenjska kuka sa vilicom

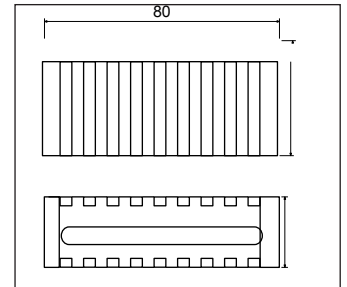
Nosivost:5000 kgs Prekidna sila: 20,000kgs  
Težina=0.97kg



Šifra br. 01389/01389A

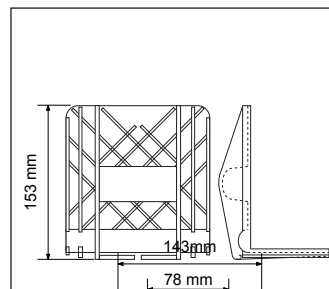
### Mehanizam za napinjanje

Mini. prekidna sila: 4,000kgs/8,800Lbs



Šifra br.04391

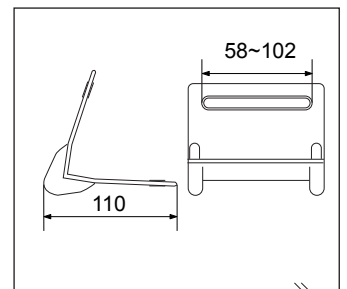
### Zaštita za gurtinu, (gumena ili plastična)



Šifra br.04394

### Zaštita - kutna (plastika-pojačana)

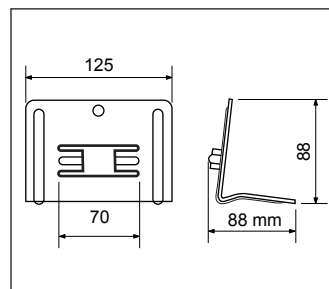
Težina=0.159kg



Šifra br.04398

### Zaštita - kutna (plastika)

Težina=0.062kg



ITEM NO.04395

### Zaštitna - kutna (čelik)

Težina=0.304kg

